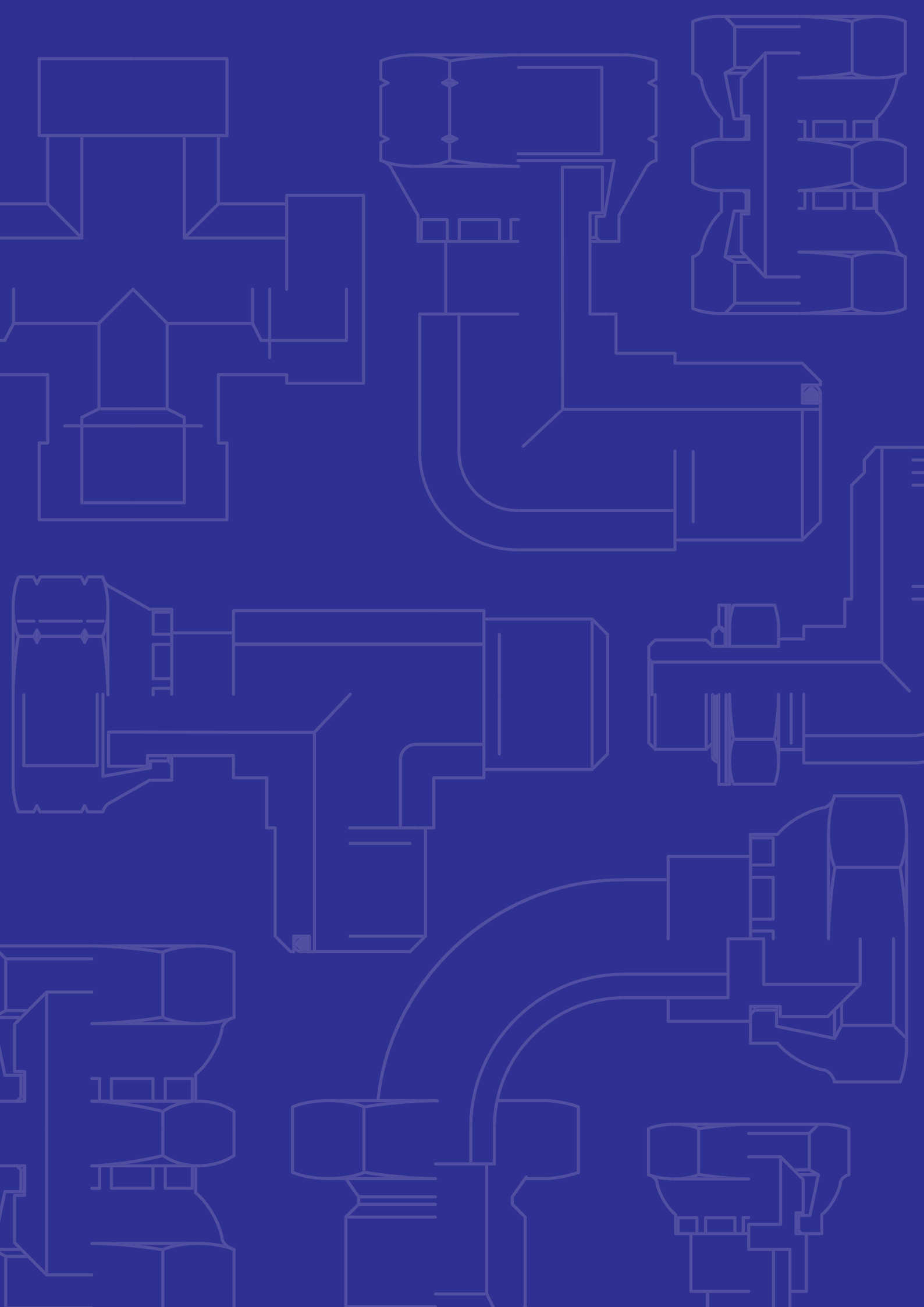




JDEPARI
OLEODINAMICA

FLUIDO ATTIVO

ADATTATORI PER IMPIANTI OLEODINAMICI



UN'AZIENDA LEADER

Presente a Pordenone dal 1971, **Depari** è un'azienda flessibile che opera con professionalità e serietà nell'ambito dell'**Oleodinamica**, applicata all'**automazione industriale** ed al settore mobile.

L'**ufficio commerciale** è in grado di soddisfare qualsiasi richiesta in tempi rapidi; i nostri consulenti infatti dispongono del giusto know how indispensabile per consigliare il cliente; ciò rappresenta il vero punto di contatto tra innovazione industriale ed esigenze del mercato. L'**ufficio tecnico** è un vero anticipatore delle novità di mercato: professionisti di comprovata esperienza sono infatti in grado di progettare differenti tipi di impianti ed apparecchiature oleodinamiche, garantendo qualità e performance. I **reparti di montaggio ed assemblaggio** sviluppano e collaudano i progetti nel pieno rispetto dei rigorosi standard di qualità e sicurezza assicurandosi della piena soddisfazione del cliente. Sostanziale punto di forza dell'azienda è il **magazzino** che, disponendo di un vasto assortimento di articoli, si presta ad un efficiente servizio di consegna "just in time".

CORE BUSINESS

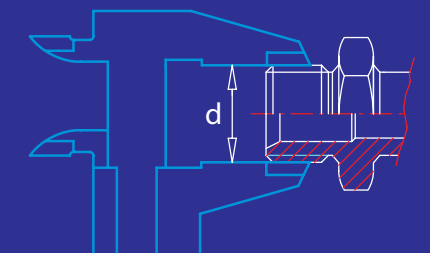
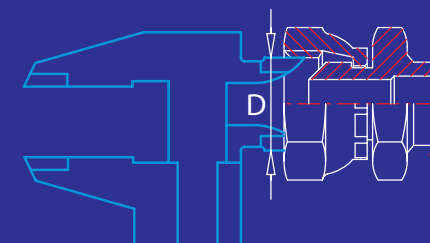
L'azienda progetta e produce centraline, cilindri, blocchi integrati, componenti oleodinamici e tubi flessibili ad alta pressione, commercializza pompe e motori, idroguidi, scambiatori di calore e filtri idraulici, valvole ed elettrovalvole, manometri e pressostati, adattatori, tubi circuiti e relativa raccorderia, e inoltre propone una vasta gamma di sistemi di tenuta.

L'affidabilità di veri professionisti dell'oleodinamica, la ricerca di prodotti che assicurano la massima qualità, la flessibilità nelle soluzioni, nei progetti proposti ed un aggiornamento costante, costituiscono i vantaggi esclusivi di **Depari, il partner ideale per aziende e professionisti del settore.**

TABELLA IDENTIFICATIVA DEI DIAMETRI ESTERNI ED INTERNI DELLE FILETTATURE

D	mm	d	COD.
M 6X1	5		00
	6	M 6X1	00
M 8x1.25	6.8		01A
M 8X1	7		01
	8	N 8X1.25	01A
	8	N 8X1	01
M 10x1.5	8.5		02B
1/8" NPTF	8.7		02
G 1/8" BSP	8.8		02
M 10X1.25	8.8		02A
M 10X1	9		02
	9.6	G 1/8" BSP	02
7/16" JIC	9.9		S6
	10	M 10X1	02
	10	M 10X1.25	02A
	10	M 10X1.5	02B
	10.3	1/8" NPTF	02
M 12X1.5	10.5		03
	11.2	7/16 JIC	S6
1/2" JIC	11.5		S8
G 1/4" BSP	11.8		04
1/4" NPTF	11.9		04
	12	M 12X1.5	03
M 14X1.5	12.5		04
	12.6	1/2" JIC	S8
9/16" JIC	12.9		S10
9/16" ORFS	12.9		S4
	13	G 1/4" BSP	04
	14	M 14X1.5	04
	14.1	9/16" JIC	S10
	14.1	9/16" ORFS	S4
	14.3	1/4" NPTF	04
M 16X1.5	14.5		06
3/8" NPTF	15.1		06
G 3/8" BSP	15.25		06
11/16" ORFS	15.9		S6
	16	M 16X1.5	06
M 18X1.5	16.5		08
	16.6	G 3/8" BSP	06
	17.3	11/16" ORFS	S6
	17.5	3/8" NPTF	06
3/4" JIC	17.5		S12
	18	M 18X1.5	08
1/2" NPTF	18.3		08
M 20X1.5	18.5		09
	18.9	3/4" JIC	S12
G 1/2" BSP	19		08
13/16" ORFS	19.1		S8
	20	M 20X1.5	09
7/8" JIC	20.5		S16

D	mm	d	COD.
M 22X1.5	20.5		10
	20.5	13/16" ORFS	S8
	20.8	G 1/2" BSP	08
G 5/8" BSP	21		10
	21.4	1/2" NPTF	08
	22	M 22X1.5	10
	22.1	7/8" JIC	S16
M 24X1.5	22.5		11
	22.9	G 5/8" BSP	10
1" ORFS	23.6		S10
3/4" NPTF	23.8		12
	24	M 24X1.5	11
M 26X1.5	24.5		12
G 3/4" BSP	24.5		12
1 1/16" JIC	24.9		S20
M 27X2	25		27
	25.2	1" ORFS	S10
	26	M 26X1.5	12
	26.4	G 3/4" BSP	12
	26.9	1 1/16" JIC	S20
	27	M 27X2	27
	27	3/4" NPTF	12
1 3/16" ORFS	28.1		S12
	30	1 3/16" ORFS	S12
1" NPTF	30.2		16
G 1" BSP	30.75		16
M 33X2	31		33
1 5/16" JIC	31.3		S25
	33	M 33X2	33
	33.1	G 1" BSP	16
	33.2	1 5/16" JIC	S25
	33.3	1" NPTF	16
1 7/16" ORFS	34.4		S16
	36.3	1 7/16" ORFS	S16
1 5/8" JIC	39.2		S30
G 1 1/4" BSP	39.3		20
1 11/16" ORFS	40.8		S20
	41.1	1 5/8" JIC	S30
	41.7	G 1 1/4" BSP	20
	42.7	1 11/16" ORFS	S20
G 1 1/2" BSP	45.2		24
1 7/8" JIC	45.6		S38
	47.4	1 7/8" JIC	S38
	47.8	G 1 1/2" BSP	24
2" ORFS	48.7		S24
	50.6	2" ORFS	S24
G 2" BSP	57		32
	59.5	G 2" BSP	32
G 2 1/2" BSP	72.6		40
	74.8	G 2 1/2" BSP	40





09

GAS
METRICO
60°

45

JIC 37°

61

ORFS

ADATTATORI PER IMPIANTI OLEODINAMICI

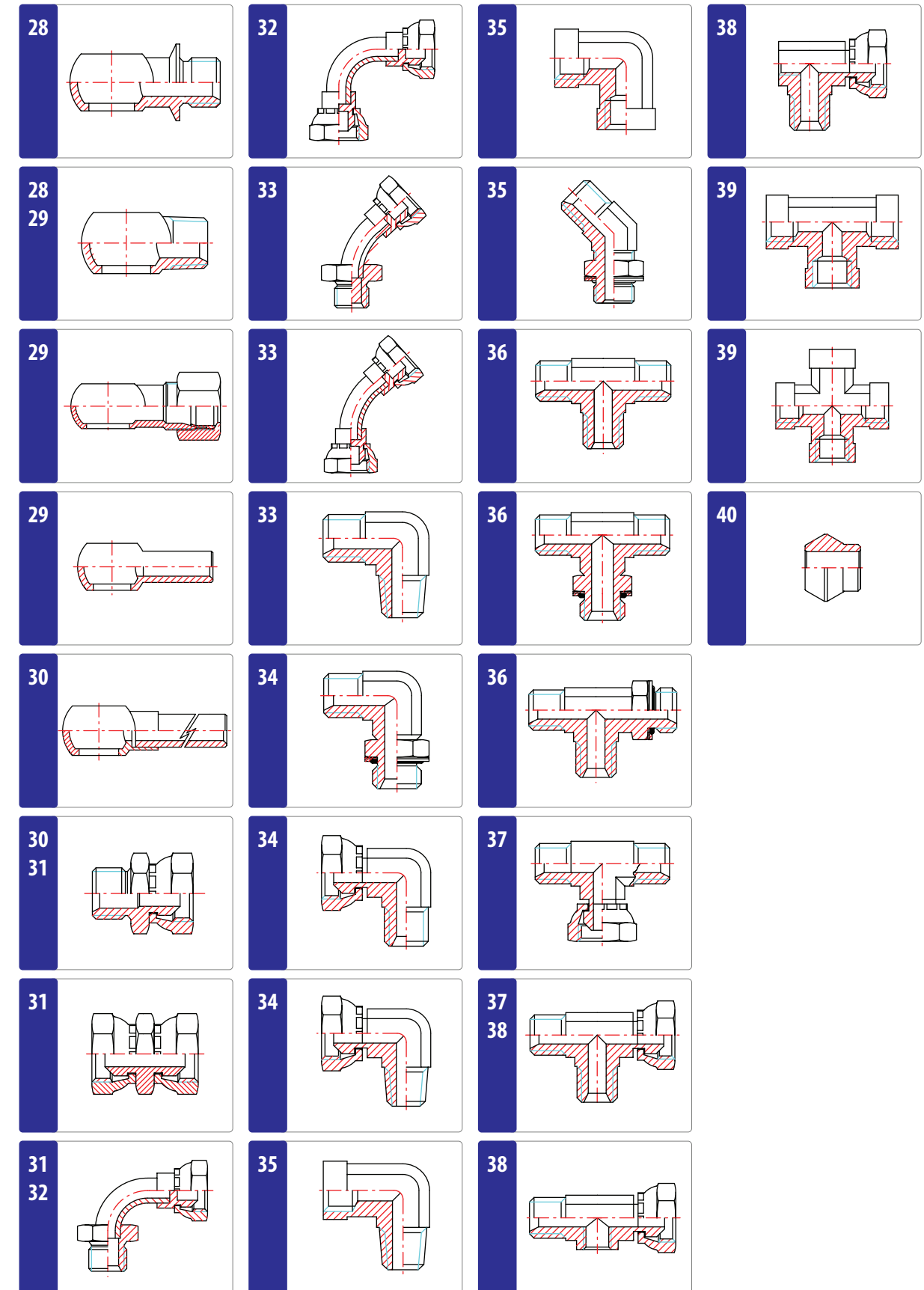
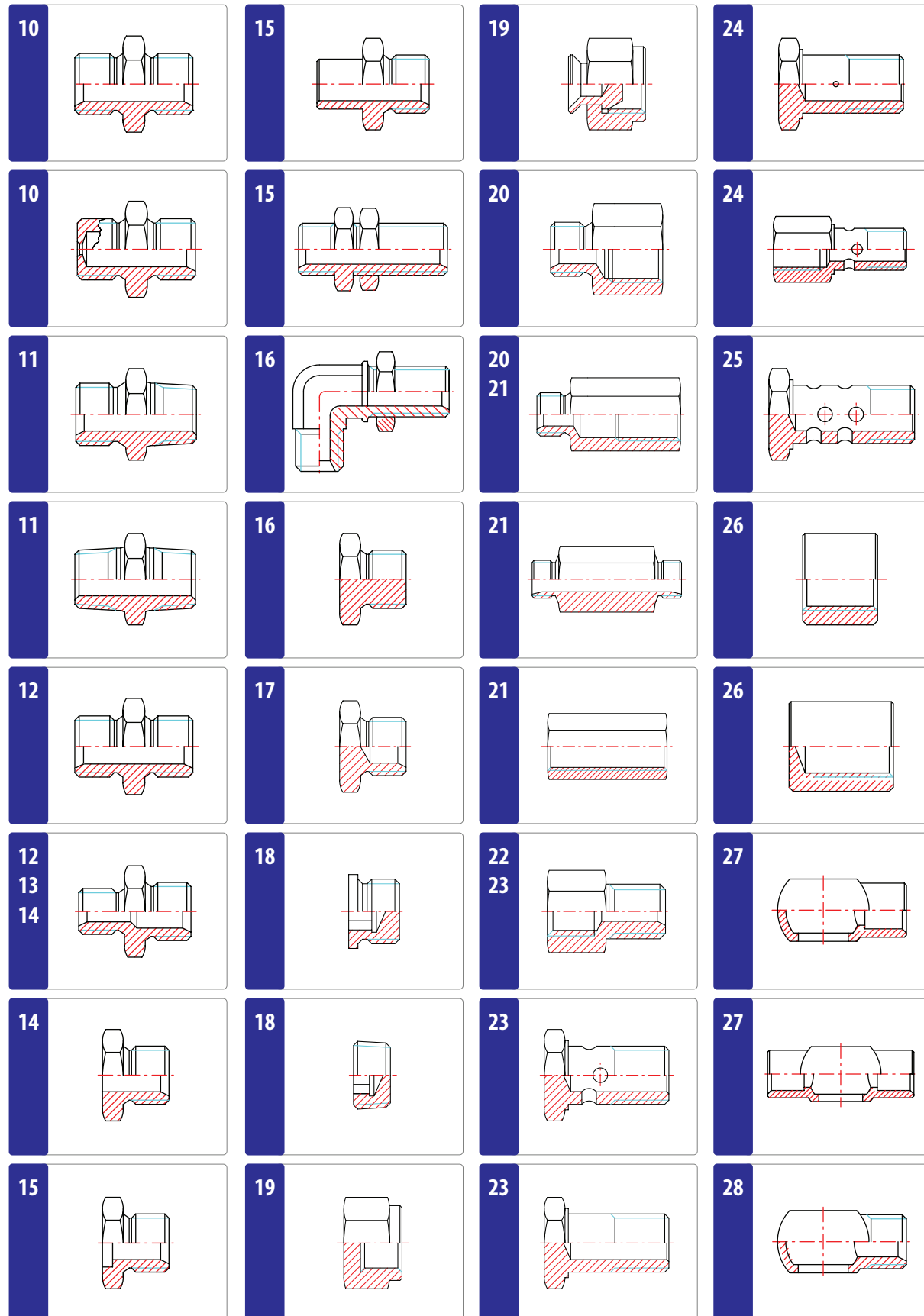


DEPARI
OLEODINAMICA

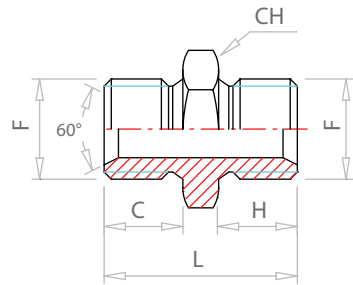
FORNITURA E COSTRUZIONE COMPONENTI OLEODINAMICI



**GAS
METRICO 60°**

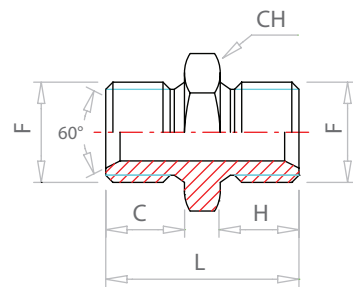


NIPPLO MASCHIO GAS
MASCHIO GAS



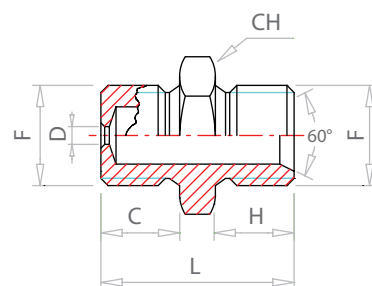
CODICE	F	C	H	L	CH
NG02	1/8	9.5	9.5	25	14
NG04	1/4	11	11	29	19
NG06	3/8	13	13	33	22
NG08	1/2	15	15	38	27
NG10	5/8	15	15	38	27
NG12	3/4	17	17	43	32
NG16	1	19.5	19.5	49	41
NG20	1 1/4	21	21	53	50
NG24	1 1/2	22	22	56	55
NG32	2	23	23	59	70
NG40	2 1/2	29	29	77	85

NIPPLO AISI 316
MASCHIO GAS
MASCHIO GAS



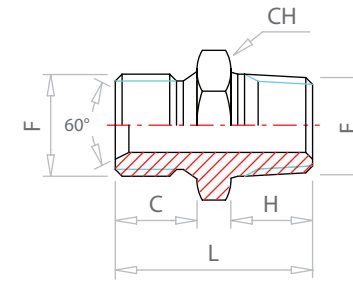
CODICE	F	C	H	L	CH	D
NG04 - I	1/4	11	11	29	19	
NG06 - I	3/8	13	13	33	22	
NG08 - I	1/2	15	15	38	27	
NG12 - I	3/4	17	17	43	32	
NG16 - I	1	19.5	19.5	49	41	

NIPPLO FORO CALIBRATO
MASCHIO GAS
MASCHIO GAS



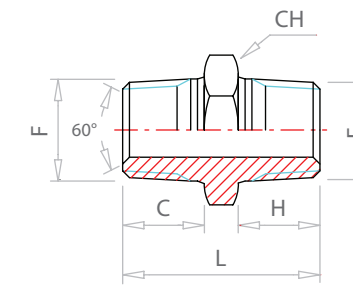
CODICE	F	C	H	L	CH	D
NG04C06	1/4	11	11	29	19	0.6
NG04C08	1/4	11	11	29	19	0.8
NG04C10	1/4	11	11	29	19	1
NG04C15	1/4	11	11	29	19	1.5
NG06C06	3/8	13	13	33	22	0.6
NG06C08	3/8	13	13	33	22	0.8
NG06C10	3/8	13	13	33	22	1
NG06C15	3/8	13	13	33	22	1.5

NIPPLO MASCHIO GAS
MASCHIO CONICO GAS



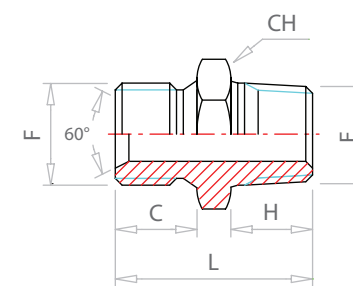
CODICE	F	E	C	H	L	CH
NGGC04	1/4	1/4	11	13	31	19
NGGC06	3/8	3/8	13	15	35	22
NGGC08	1/2	1/2	15	17	40	27
NGGC12	3/4	3/4	17	19	45	32
NGGC16	1	1	19	21.5	51	41
NGGC20	1 1/4	1 1/4	21	24	56	50
NGGC24	1 1/2	1 1/2	22	25	59	55
NGGC32	2	2	22	25	61	70
NGGC40	2 1/2	2 1/2	32	28	81	85

NIPPLO MASCHIO CONICO GAS
MASCHIO CONICO GAS



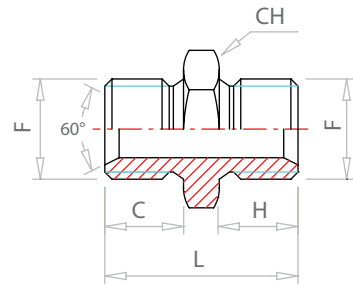
CODICE	F	E	C	H	L	CH
NGC04	1/4	1/4	14	14	35	17
NGC06	3/8	3/8	14	14	36	19
NGC08	1/2	1/2	19	19	47	22

NIPPLO MASCHIO GAS
MASCHIO GAS NPTF



CODICE	F	E	C	H	L	CH
NGN04	1/4	1/4	11	13	31	19
NGN06	3/8	3/8	13	15	35	22
NGN08	1/2	1/2	15	17	40	27
NGN12	3/4	3/4	17	19	45	32
NGN16	1	1	19	21.5	51	41

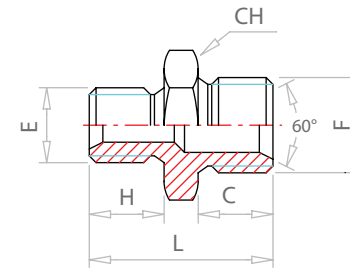
NIPLO
MASCHIO METRICO
MASCHIO METRICO



CODICE

	F	C	H	L	CH
NM02	10x1	9.5	9.5	25	14
NM03	12x1.5	11	11	28	17
NM04	14x1.5	11	11	29	19
NM06	16x1.5	13	13	33	22
NM08	18x1.5	14	14	36	24
NM10	22x1.5	15	15	38	27
NM12	26x1.5	17	17	43	32

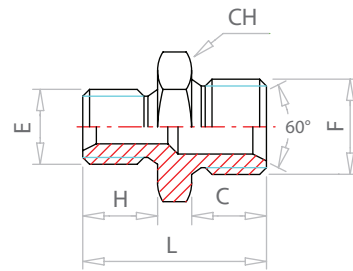
NIPLO RIDOTTO AISI 316
MASCHIO GAS
MASCHIO GAS



CODICE

	E	F	C	H	L	CH
NRG0204 - I	1/8	1/4	11	9.5	28	19
NRG0406 - I	1/8	3/8	13	9.5	30	22
NRG0408 - I	1/4	3/8	13	11	31	22
NRG0608 - I	1/4	1/2	15	11	34	27
NRG0612 - I	1/4	3/4	17	11	37	32
NRG0812 - I	3/8	1/2	15	13	36	27

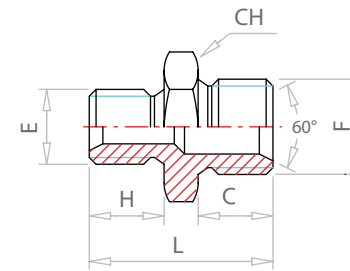
NIPLO RIDOTTO
MASCHIO GAS
MASCHIO GAS



CODICE

	E	F	C	H	L	CH
NRG0204	1/8	1/4	11	9.5	28	19
NRG0206	1/8	3/8	13	9.5	30	22
NRG0406	1/4	3/8	13	11	31	22
NRG0408	1/4	1/2	15	11	34	27
NRG0412	1/4	3/4	17	11	37	32
NRG0608	3/8	1/2	15	13	36	27
NRG0612	3/8	3/4	17	13	39	32
NRG0616	3/8	1	19	13	42	41
NRG0810	1/2	5/8	15	13	37	27
NRG0812	1/2	3/4	17	15	41	32
NRG0816	1/2	1	19	15	44	41
NRG0820	1/2	1 1/4	21	15	47	50
NRG0824	1/2	1 1/2	21	15	49	55
NRG1012	5/8	3/4	17	15	41	32
NRG1216	3/4	1	19	17	46	41
NRG1220	3/4	1 1/4	21	17	49	50
NRG1224	3/4	1 1/2	22	17	51	55
NRG1620	1	1 1/4	21	19	51	50
NRG1624	1	1 1/2	22	19	53	55
NRG1632	1	2	23	19	54	70
NRG2024	1 1/4	1 1/2	22	21	55	55
NRG2032	1 1/4	2	23	21	56	70
NRG2432	1 1/2	2	23	22	56	70

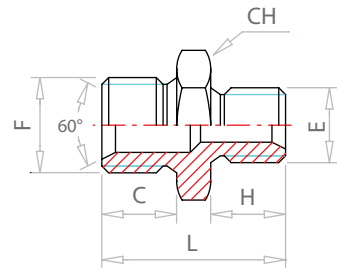
NIPLO RIDOTTO
MASCHIO METRICO
MASCHIO METRICO



CODICE

	E	F	C	H	L	CH
NRM0406	14X1.5	16X1.5	13	11	31	22
NRM0408	14X1.5	18X1.5	14	11	33	24
NRM0608	16X1.5	18X1.5	14	13	35	24
NRM0810	18X1.5	22X1.5	15	14	37	27

NIPPO RIDOTTO
MASCHIO GAS
MASCHIO METRICO

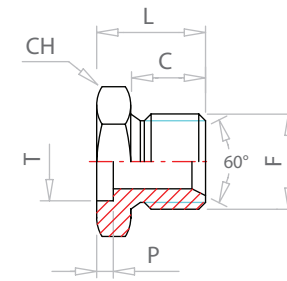


CODICE

NGM0402
NGM0403
NGM0404
NGM0406
NGM0408
NGM0410
NGM0604
NGM0606
NGM0608
NGM0610
NGM0804
NGM0806
NGM0808
NGM0809
NGM0810
NGM0811
NGM0812
NGM1208
NGM1210
NGM1211
NGM1212

F	E	C	H	L	CH
1/4	10X1	11	9.5	27	19
1/4	12X1.5	11	11	29	19
1/4	14X1.5	11	11	29	19
1/4	16X1.5	11	13	31	22
1/4	18X1.5	11	14	33	24
1/4	22X1.5	11	15	35	27
3/8	14X1.5	13	11	31	22
3/8	16X1.5	13	13	33	22
3/8	18X1.5	13	14	35	24
3/8	22X1.5	13	15	36	27
1/2	14X1.5	15	11	34	27
1/2	16X1.5	15	13	36	27
1/2	18X1.5	15	14	37	27
1/2	20X1.5	15	15	38	27
1/2	22X1.5	15	15	38	27
1/2	24X1.5	15	16	40	30
1/2	26X1.5	15	17	41	30
3/4	18X1.5	17	14	40	32
3/4	22X1.5	17	15	41	32
3/4	24X1.5	17	17	43	32
3/4	26X1.5	17	17	43	32

NIPPO A SALDARE
MASCHIO METRICO

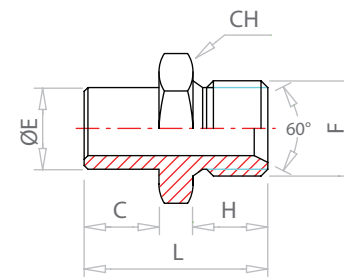


CODICE

NSM04

F	L	CH	C	T	P
14X1.5	19	19	12	12	4

NIPPO A SALDARE
MASCHIO GAS CON CODOLO CILINDRICO

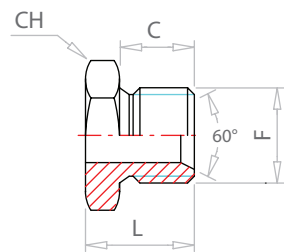


CODICE

NSG16CD32FE
NSG20CD32FE

F	ØE	C	H	L	CH
1	32	19.5	19.5	49	41
1 1/4	32	21	21	53	50

NIPPO A SALDARE
MASCHIO GAS

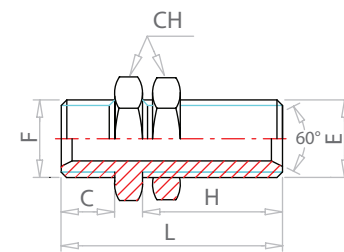


CODICE

NSG04
NSG06
NSG08
NSG12
NSG16
NSG20
NSG24
NSG32

F	L	CH	C
1/4	18	19	11
3/8	21	22	13
1/2	25	27	15
3/4	27	32	17
1	30	41	19
1 1/4	32	50	21
1 1/2	34	55	22
2	36	70	23

PASSAPARETE
MASCHIO GAS
MASCHIO GAS CON CONTRODADO

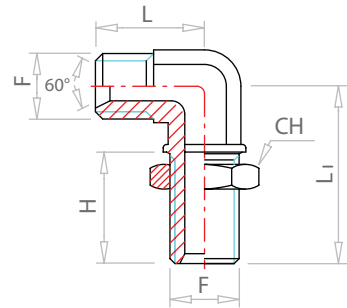


CODICE

PPG04
PPG06
PPG08
PPG12
PPG16
PPG20

F	E	C	H	L	CH
1/4	1/4	11	28	47	19
3/8	3/8	13	28	50	22
1/2	1/2	15	34	50	27
3/4	3/4	17	38	66	32
1	1	20	42	70	41
1 1/4	1 1/4	22	45	81	50

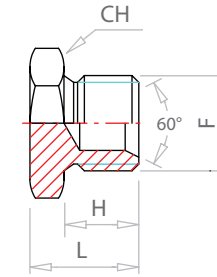
PASSAPARETE A 90°
MASCHIO GAS
MASCHIO GAS CON CONTRODADO



CODICE

	F	H	L	L ₁	CH
PP90G04	1/4	29	26	44	19
PP90G06	3/8	31	27.5	49	22
PP90G08	1/2	37	33	54	27
PP90G12	3/4	37	42	63	32
PP90G16	1	41	47	69	41

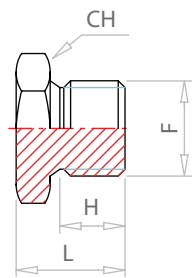
TAPPO
MASCHIO GAS
TESTA ESAGONALE SVASATO



CODICE

	F	H	L	CH
TMEG02SV	1/8	7	12	14
TMEG04SV	1/4	11	18	19
TMEG06SV	3/8	13	20	22
TMEG08SV	1/2	13	22	27
TMEG12SV	3/4	15	24	32
TMEG16SV	1	17	27	41
TMEG20SV	1 1/4	18	29	50
TMEG24SV	1 1/2	22	35	55
TMEG32SV	2	22	35	70

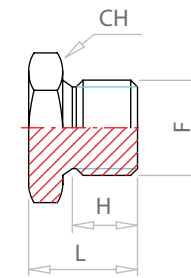
TAPPO
MASCHIO GAS
TESTA ESAGONALE



CODICE

	F	H	L	CH
TMEG02	1/8	7	12	14
TMEG04	1/4	11	18	19
TMEG06	3/8	13	20	22
TMEG08	1/2	13	22	27
TMEG12	3/4	15	24	32
TMEG16	1	17	27	41
TMEG20	1 1/4	18	29	50
TMEG24	1 1/2	22	35	55
TMEG32	2	22	35	70

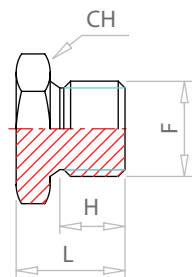
TAPPO
MASCHIO METRICO
TESTA ESAGONALE



CODICE

	F	H	L	CH
TMEM04	14X1.5	11	18	19
TMEM06	16X1.5	12	20	22
TMEM08	18X1.5	13	21	24
TMEM09	20X1.5	13	22	27
TMEM10	22X1.5	15	24	27

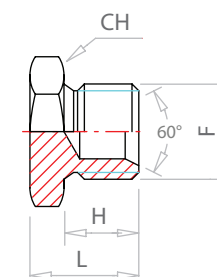
TAPPO AISI 316
MASCHIO GAS
TESTA ESAGONALE



CODICE

	F	H	L	CH
TMEG04 - I	1/4	11	18	19
TMEG06 - I	3/8	13	20	22
TMEG08 - I	1/2	13	22	27
TMEG12 - I	3/4	15	24	32
TMEG16 - I	1	17	27	41

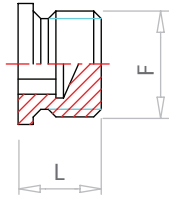
TAPPO
MASCHIO METRICO
TESTA ESAGONALE SVASATO



CODICE

	F	H	L	CH
TMEM10SV	22X1.5	15	24	27

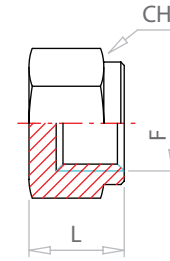
TAPPO MASCHIO GAS ESAGONO INCASSATO



CODICE

	F	L				
TMBG02	1/8	11				
TMBG04	1/4	15				
TMBG06	3/8	15				
TMBG08	1/2	18				
TMBG12	3/4	20				
TMBG16	1	21				

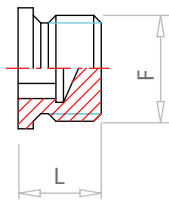
TAPPO FEMMINA GAS



CODICE

	F	L	CH			
TFG04	1/4	14	19			
TFG06	3/8	17	22			
TFG08	1/2	18	27			
TFG12	3/4	23	32			
TFG16	1	25	41			
TFG20	1 1/4	28	50			
TFG24	1 1/2	29	55			
TFG32	2	31	70			

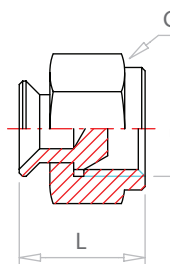
TAPPO MASCHIO METRICO ESAGONO INCASSATO



CODICE

	F	L				
TMBM02	10X1	11				
TMBM03	12X1.5	15				
TMBM04	14X1.5	15				
TMBM06	16X1.5	15				
TMBM08	18X1.5	16				
TMBM09	20X1.5	18				
TMBM10	22X1.5	18				
TMBM11	24X1.5	18				

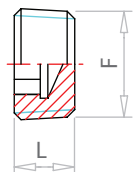
TAPPO FEMMINA GAS CON OGIVA



CODICE

	E	L	CH			
TF0G02	1/8	17	14			
TF0G04	1/4	19	19			
TF0G06	3/8	21	22			
TF0G08	1/2	24	27			
TF0G12	3/4	30	32			
TF0G16	1	32	41			
TF0G20	1 1/4	34	50			
TF0G24	1 1/2	35	55			
TF0G32	2	35	70			

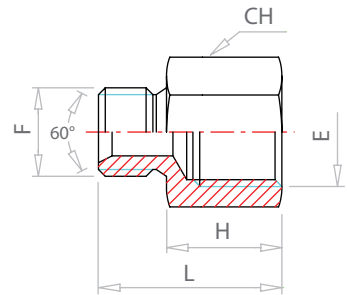
TAPPO MASCHIO GAS CONICO DIN 906



CODICE

	F	L				
TCG02	1/8	8				
TCG04	1/4	10				
TCG06	3/8	10				
TCG08	1/2	10				
TCG12	3/4	12				
TCG16	1	12				

PROLUNGA
MASCHIO GAS
FEMMINA GAS

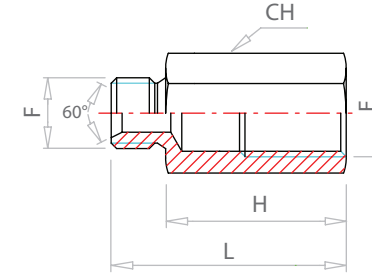


CODICE

PG02
PG04
PG06
PG08
PG12
PG16
PG20
PG24
PG32

F	E	H	L	CH
1/8	1/8	17	27	14
1/4	1/4	20	31	19
3/8	3/8	22	35	22
1/2	1/2	25	40	27
3/4	3/4	29	46	32
1	1	31	50	41
1 1/4	1 1/4	32	53	50
1 1/2	1 1/2	35	57	55
2	2	40	65	70

PROLUNGA LUNGA
MASCHIO METRICO
FEMMINA METRICA

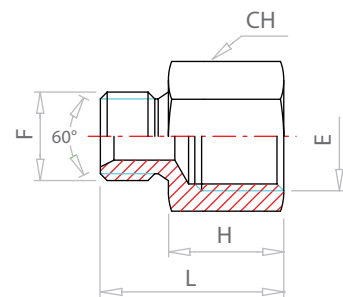


CODICE

PLM08
PLM10

F	E	H	L	CH
18X1.5	18X1.5	40	53	24
22X1.5	22X1.5	45	60	27

PROLUNGA
MASCHIO METRICO
FEMMINA METRICA

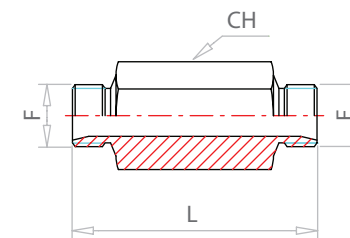


CODICE

PM08

F	E	H	L	CH
18X1.5	18X1.5	22	35	24

PROLUNGA
MASCHIO GAS
MASCHIO GAS

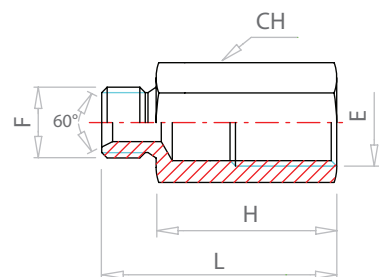


CODICE

MMG04
MMG06
MMG08
MMG12

F	L	CH
1/4	35	19
3/8	35	22
1/2	45	27
3/4	45	32

PROLUNGA LUNGA
MASCHIO GAS
FEMMINA GAS

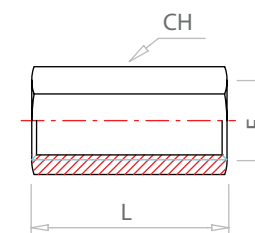


CODICE

PLG02
PLG04
PLG06
PLG08
PLG12
PLG16
PLG20
PLG24

F	E	H	L	CH
1/8	1/8	30	40	14
1/4	1/4	35	46	19
3/8	3/8	39	52	22
1/2	1/2	45	60	27
3/4	3/4	48	65	32
1	1	70	89	41
1 1/4	1 1/4	70	91	50
1 1/2	1 1/2	75	97	55

PROLUNGA
FEMMINA GAS

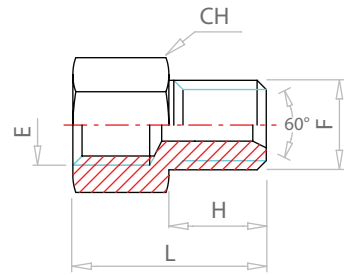


CODICE

FFG02L30
FFG04L25
FFG04L30
FFG04L35
FFG06L30
FFG06L35
FFG06L45
FFG08L45
FFG12L45
FFG16L45
FFG16L50
FFG20L55
FFG24L55

F	L	CH
1/8	30	14
1/4	25	19
1/4	30	19
1/4	35	19
3/8	30	22
3/8	35	22
3/8	45	22
1/2	45	27
3/4	45	32
1	45	41
1	50	41
1 1/4	55	55
1 1/2	55	60

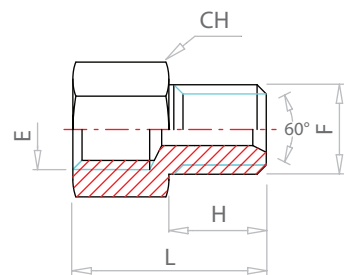
PROLUNGA RIDOTTA
MASCHIO GAS
FEMMINA GAS



CODICE

	F	E	H	L	CH
PRG0402	1/4	1/8	11	31	19
PRG0406	1/4	3/8	11	33	22
PRG0408	1/4	1/2	11	36	27
PRG0604	3/8	1/4	9	31	22
PRG0608	3/8	1/2	13	38	27
PRG0612	3/8	3/4	13	44	32
PRG0804	1/2	1/4	15	36	27
PRG0806	1/2	3/8	15	36	27
PRG0812	1/2	3/4	15	46	32
PRG0816	1/2	1	15	47	41
PRG1206	3/4	3/8	17	42	32
PRG1208	3/4	1/2	17	42	32
PRG1216	3/4	1	17	49	41
PRG1608	1	1/2	19	50	41
PRG1612	1	3/4	19	50	41
PRG2016	1 1/4	1	21	53	50
PRG2412	1 1/2	3/4	22	35	55
PRG2416	1 1/2	1	22	54	55
PRG3216	2	1	22	35	70
PRG3220	2	1 1/4	22	35	70

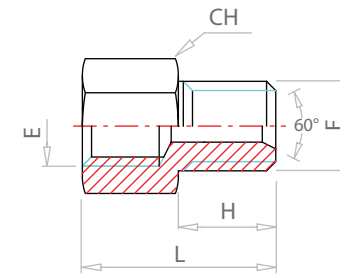
PROLUNGA RIDOTTA
MASCHIO GAS
FEMMINA METRICA



CODICE

	F	E	H	L	CH
PRGM0608	3/8	18X1.5	13	35	24
PRGM0808	1/2	18X1.5	15	37	27
PRGM0810	1/2	22X1.5	15	40	27

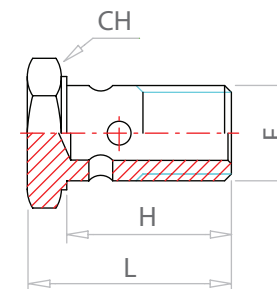
PROLUNGA RIDOTTA
MASCHIO METRICO
FEMMINA GAS



CODICE

	F	E	H	L	CH
PRGM0804	18X1.5	1/4	13	34	22
PRGM0806	18X1.5	3/8	14	36	24
PRGM1008	22X1.5	1/2	15	40	27

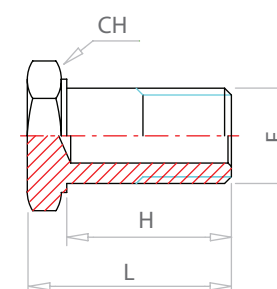
VITE FORATA GAS



CODICE

	F	H	L	CH
VFG02	1/8	19	24	14
VFG04	1/4	25	32	19
VFG04L	1/4	29	36	19
VFG06	3/8	31	38	22
VFG08	1/2	38	46	27
VFG08L	1/2	41	49	27
VFG10	5/8	41	49	30
VFG12	3/4	46	56	32
VFG16	1	58	69	41

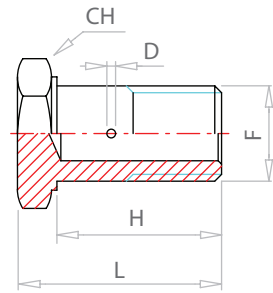
VITE SENZA FORI
GAS



CODICE

	F	H	L	CH
VFG04SF	1/4	25	32	19
VFG06SF	3/8	31	38	22
VFG08SF	1/2	38	46	27

VITE FORATA GAS
CON FORO CALIBRATO

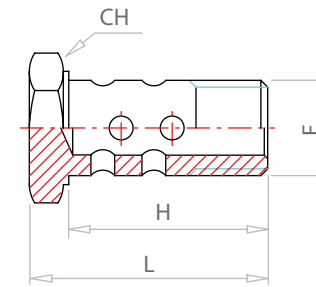


CODICE

VFG02C10

F	H	L	CH	D		
1/8	19	24	14	1		

VITE FORATA DOPPIA
GAS



CODICE

VFDG02

VFDG04

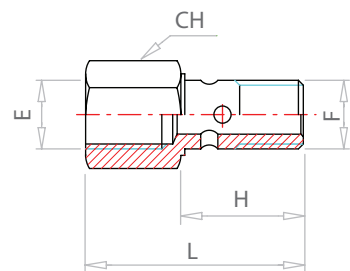
VFDG06

VFDG08

VFDG12

F	H	L	CH		
1/8	33	38	14		
1/4	43	49	19		
3/8	51	58	22		
1/2	63	71	27		
3/4	80	90	32		

VITE FORATA GAS
CON FEMMINA GAS

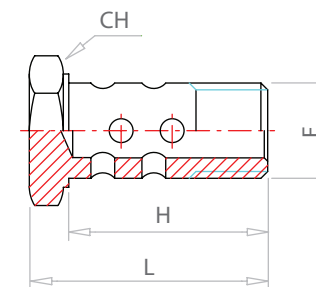


CODICE

VFG04F04

F	E	H	L	CH		
1/4	1/4	27	47	19		

VITE FORATA DOPPIA
METRICA



CODICE

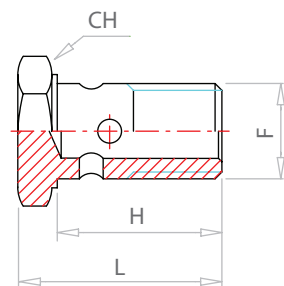
VFDM04

VFDM06

VFDM08

F	H	L	CH		
14X1.5	43	49	19		
16X1.5	51	58	22		
18X1.5	57	65	24		

VITE FORATA METRICA



CODICE

VFM00

VFM01

VFM01A

VFM02

VFM02A

VFM02B

VFM03

VFM04

VFM06

VFM08

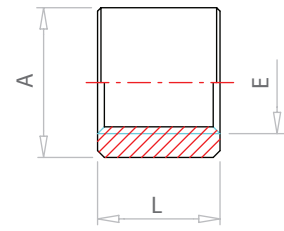
VFM09

VFM10

VFM11

F	H	L	CH		
6X1	16	21	10		
8X1	16	21	12		
8X1.25	16	21	12		
10X1	19	24	14		
10X1.25	19	24	14		
10X1.5	19	24	14		
12X1.5	26	31	17		
14X1.5	25	32	19		
16X1.5	30	37	22		
18X1.5	36	44	24		
20X1.5	38	46	27		
22X1.5	38	46	27		
24X1.5	41	49	30		

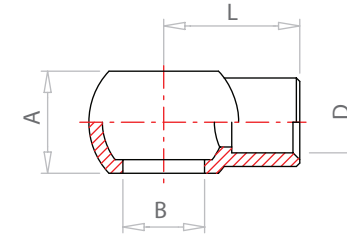
BORCHIA A SALDARE GAS



CODICE

	E	A	L			
BSG02S	1/8	16	10			
BSG04	1/4	22	16			
BSG04H40	1/4	22	40			
BSG06	3/8	25	17			
BSG08	1/2	30	18			
BSG12	3/4	38	20			
BSG16	1	45	26			
BSG20	1 1/4	55	26			
BSG24	1 1/2	62	30			
BSG32	2	70	30			

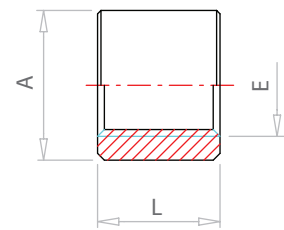
OCCHIO A SALDARE GAS



CODICE

	B	D	A	L		
OSG0206	1/8	6	10	19		
OSG0410	1/4	10	14	24		
OSG0612	3/8	12	18	28		
OSG0816	1/2	16	22	32		
OSG1220	3/4	20	29	40		
OSG1627	1	27	36	40		

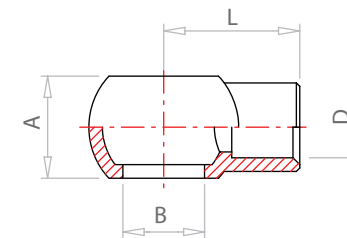
BORCHIA A SALDARE METRICA



CODICE

	E	A	L			
BSM04	14X1.5	22	16			
BSM06	16X1.5	26	17			
BSM08	18X1.5	28	18			

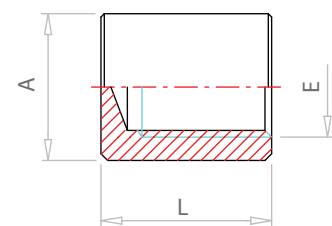
OCCHIO A SALDARE METRICO



CODICE

	B	D	A	L		
OSM0004	6	4	7	13		
OSM0104	8	4	8	15		
OSM0206	10	6	10	17		
OSM0306	12	6	12	22		
OSM0408	14	8	14	24		
OSM0410	14	10	14	24		
OSM0410H15	14	10	15	24		
OSM0612	16	12	18	28		
OSM0814	18	14	20	29		
OSM1014	22	14	22	32		

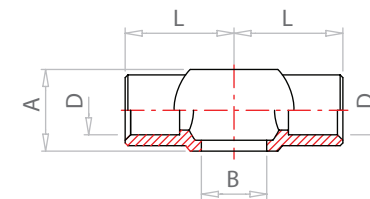
BORCHIA A SALDARE GAS CIECA



CODICE

	E	A	L			
BSCG04	1/4	22	30			
BSCG06	3/8	26	35			
BSCG08	1/2	30	18			

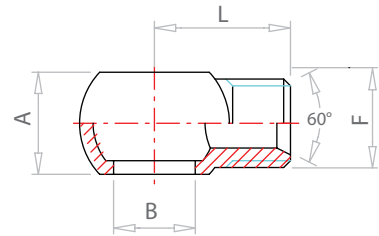
OCCHIO A SALDARE METRICO DOPPIO



CODICE

	B	D	A	L		
OSDM0206	10	6	10	17		

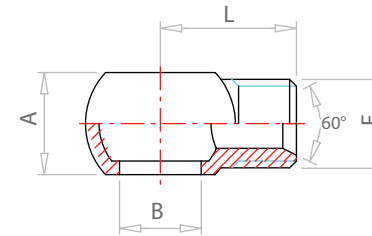
OCCHIO GAS
FILETTATO GAS



CODICE

	B	F	A	L		
OFG0404	1/4	1/4	14	25		
OFG0604	3/8	1/4	18	25		
OFG0606	3/8	3/8	18	28		
OFG0806	1/2	3/8	22	32		
OFG0808	1/2	1/2	22	32		
OFG1212	3/4	3/4	29	40		

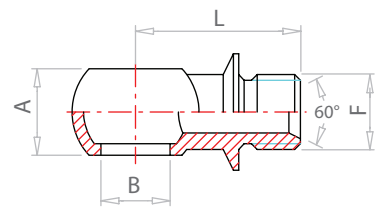
OCCHIO METRICO
FILETTATO METRICO



CODICE

	B	F	A	L		
OFM0606	16	16X1.5	19	29		
OFM0808	18	18X1.5	20	30		

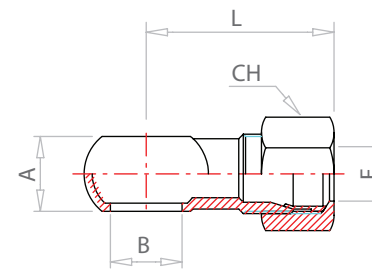
OCCHIO GAS
FILETTATO GAS
CON BATTUTA



CODICE

	B	F	A	L		
OFGB0404	1/4	1/4	14	31		

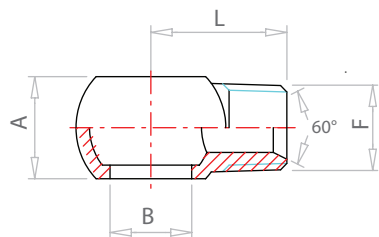
OCCHIO GAS
CON OGIVA DIN 2353



CODICE

	B	F	A	L	CH	
OG04ME12L	1/4	12	14	43.5	22	
OG06ME12L	3/8	12	17	38.5	22	
OG08ME15L	1/2	15	22	44.5	27	

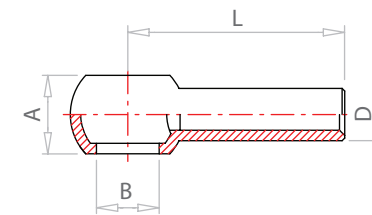
OCCHIO GAS
FILETTATO CONICO GAS



CODICE

	B	F	A	L		
OFGC0404	1/4	1/4	14	25		
OFGC0606	3/8	3/8	18	28		
OFGC0808	1/2	1/2	22	32		

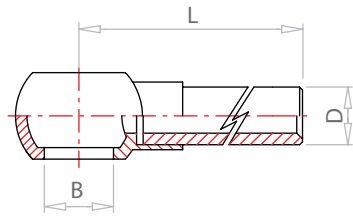
OCCHIO GAS
ORIENTABILE



CODICE

	B	D	A	L		
OG04T12038	1/4	12	15	38		
OG04T12205	1/4	12	15	205		
OG06T12040	3/8	12	17	40		

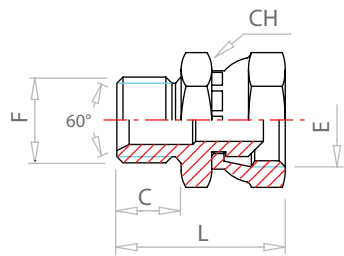
OCCHIO GAS ORIENTABILE



CODICE

	B	D	L			
OG04T10100	1/4	10	100			
OG04T10200	1/4	10	200			
OG04T10300	1/4	10	300			
OG06T12100	3/8	12	100			
OG06T12200	3/8	12	200			
OG06T12300	3/8	12	300			
OG06T12500	3/8	12	500			
OG08T15100	1/2	15	100			
OG08T15200	1/2	15	200			

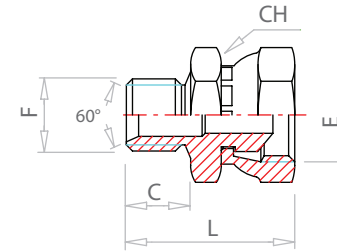
RACCORDO MASCHIO GAS FEMMINA GIREVOLE GAS



CODICE

	F	E	C	L	CH	
MFGG02	1/8	1/8	9	29	14	
MFGG04	1/4	1/4	11	35	19	
MFGG06	3/8	3/8	13	38	22	
MFGG08	1/2	1/2	15	44	27	
MFGG12	3/4	3/4	17	52	32	
MFGG16	1	1	19	59	41	
MFGG20	1 1/4	1 1/4	21	65	50	
MFGG24	1 1/2	1 1/2	22	68	55	
MFGG32	2	2	23	72	70	

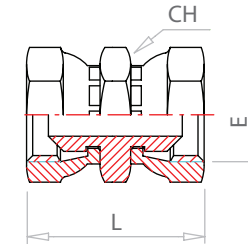
RACCORDO RIDOTTO MASCHIO GAS FEMMINA GIREVOLE GAS



CODICE

	F	E	C	L	CH	
MFGRG0406	1/4	3/8	11	37	19	
MFGRG0408	1/4	1/2	11	37	19	
MFGRG0604	3/8	1/4	12	35	22	
MFGRG0608	3/8	1/2	12	40	22	
MFGRG0804	1/2	1/4	14	39	27	
MFGRG0806	1/2	3/8	14	41.5	27	
MFGRG0812	1/2	3/4	14	46.5	27	
MFGRG1206	3/4	3/8	16	46	32	
MFGRG1208	3/4	1/2	16	46	32	

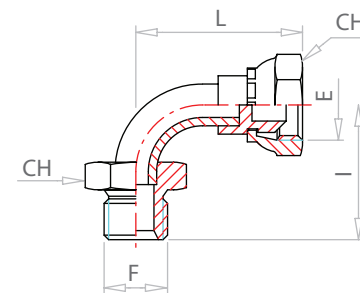
RACCORDO FEMMINA GIREVOLE GAS FEMMINA GIREVOLE GAS



CODICE

	E	L	CH			
FFGG04	1/4	36	19			
FFGG06	3/8	40	22			
FFGG08	1/2	44	27			
FFGG12	3/4	54	32			
FFGG16	1	60	41			

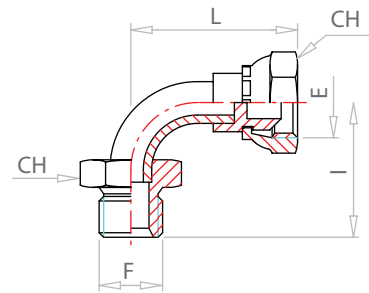
CURVA A 90° MASCHIO GAS FEMMINA GIREVOLE GAS



CODICE

	F	E	I	L	CH	
MFG90G04	1/4	1/4	38	34	19	
MFG90G06	3/8	3/8	38	38	22	
MFG90G08	1/2	1/2	45	45	27	
MFG90G12	3/4	3/4	60	60	32	
MFG90G16	1	1	70	70	41	
MFG90G20	1 1/4	1 1/4	80	80	50	
MFG90G24	1 1/2	1 1/2	100	100	55	
MFG90G32	2	2	100	100	70	

CURVA A 90° AISI 316
MASCHIO GAS
FEMMINA GIREVOLE GAS

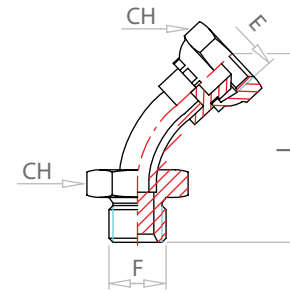


CODICE

MFG90G04-I

F	E	I	L	CH
1/4	1/4	38	34	19

CURVA A 45°
MASCHIO GAS
FEMMINA GIREVOLE GAS

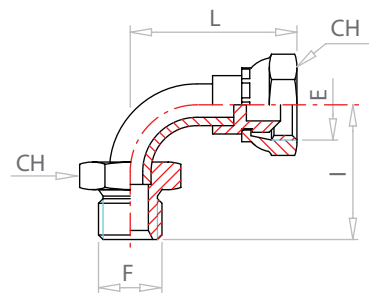


CODICE

MFG45G04
MFG45G06
MFG45G08
MFG45G12
MFG45G16
MFG45G20
MFG45G24

F	E	L	CH
1/4	1/4	41	19
3/8	3/8	49	22
1/2	1/2	58	27
3/4	3/4	70	32
1	1	84	41
1 1/4	1 1/4	94	50
1 1/2	1 1/2	140	55

CURVA A 90°
MASCHIO METRICO
FEMMINA GIREVOLE METRICA

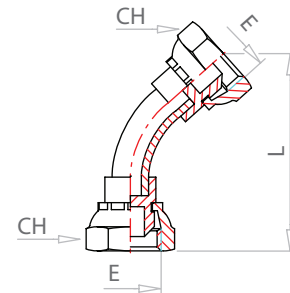


CODICE

MFG90M04
MFG90M06
MFG90M08
MFG90M10

F	E	I	L	CH
14X1.5	14X1.5	19	34	19
16X1.5	16X1.5	38	40	22
18X1.5	18X1.5	40	41	24
22X1.5	22X1.5	46	43	27

CURVA A 45°
FEMMINA GIREVOLE GAS
FEMMINA GIREVOLE GAS

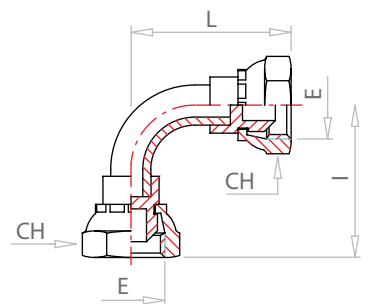


CODICE

FFG45G04
FFG45G06
FFG45G08
FFG45G12
FFG45G16

E	L	CH
1/4	35	19
3/8	45	22
1/2	48	27
3/4	60	32
1	70	41

CURVA A 90°
FEMMINA GIREVOLE GAS
FEMMINA GIREVOLE GAS

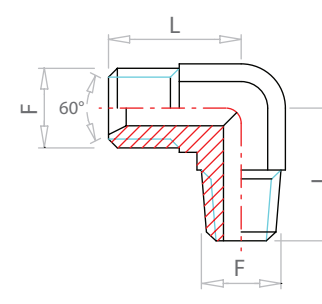


CODICE

FFG90G04
FFG90G06
FFG90G08
FFG90G12
FFG90G16
FFG90G20

E	I	L	CH
1/4	38	38	19
3/8	40	40	22
1/2	45	45	27
3/4	60	60	32
1	68	68	41
1 1/4	100	100	50

ADATTATORE A 90°
MASCHIO GAS
MASCHIO CONICO GAS

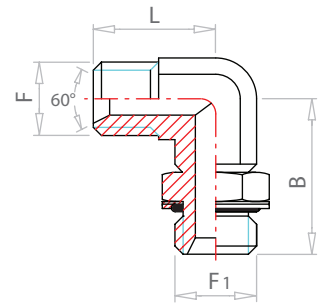


CODICE

MM90GGC02
MM90GGC04
MM90GGC06
MM90GGC08
MM90GGC12
MM90GGC16
MM90GGC20
MM90GGC24

F	L
1/8	20
1/4	28
3/8	30
1/2	37
3/4	40
1	50
1 1/4	52
1 1/2	59

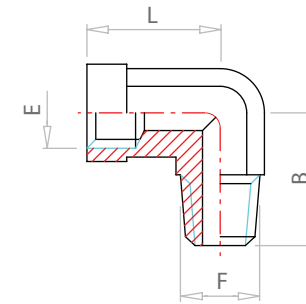
ADATTATORE A 90°
MASCHIO GAS
MASCHIO ORIENTABILE GAS



CODICE

	F	F ₁	L	B		
MM0R90G04	1/4	1/4	27	31.5		
MM0R90G06	3/8	3/8	31.5	36.6		
MM0R90G08	1/2	1/2	36.5	43		
MM0R90G12	3/4	3/4	40	49		
MM0R90RG1612	1	3/4	50	52		
MM0R90G16	1	1	50	52		
MM0R90G20	1 1/4	1 1/4	52	57		

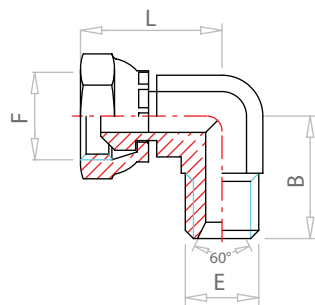
ADATTATORE A 90°
MASCHIO GAS
FEMMINA FISSA GAS



CODICE

	F	E	L	B		
MF90G02	1/8	1/8	17	20		
MF90G04	1/4	1/4	22	38		
MF90G06	3/8	3/8	26	31		
MF90G08	1/2	1/2	31	37		
MF90G12	3/4	3/4	35	40		
MF90G16	1	1	44	50		

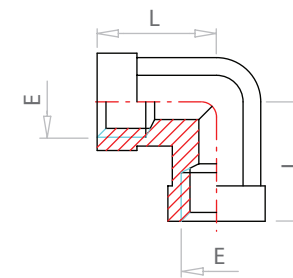
ADATTATORE A 90°
MASCHIO GAS
FEMMINA GIREVOLE GAS



CODICE

	F	E	L	B		
MFG90CG04	1/4	1/4	27	29		
MFG90CG06	3/8	3/8	31.5	34		
MFG90CG08	1/2	1/2	36	40		
MFG90CG12	3/4	3/4	40	45.5		
MFG90CG16	1	1	50	51.5		
MFG90CG20	1 1/4	1 1/4	52	57		

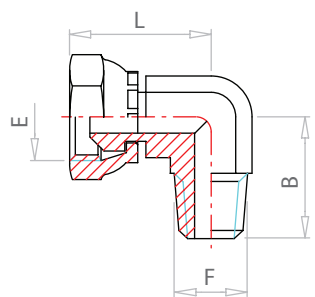
ADATTATORE A 90°
FEMMINA FISSA GAS
FEMMINA FISSA GAS



CODICE

	F	E				
FF90G04	1/4	22				
FF90G06	3/8	26				
FF90G08	1/2	31				
FF90G12	3/4	35				
FF90G16	1	44				
FF90G20	1 1/4	50				

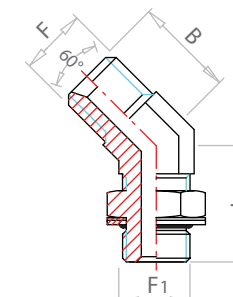
ADATTATORE A 90°
FEMMINA GIREVOLE GAS
MASCHIO CONICO GAS



CODICE

	F	E	L	B		
MCFG90G04	1/4	1/4	27	29		
MCFG90G06	3/8	3/8	31.5	34		
MCFG90G08	1/2	1/2	36	40		
MCFG90G12	3/4	3/4	40	45.5		
MCFG90G16	1	1	50	51.5		

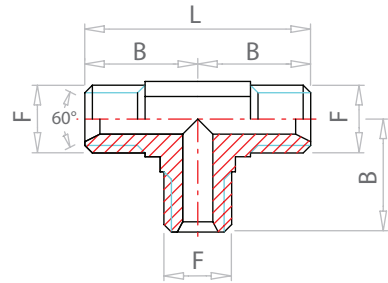
ADATTATORE A 45°
MASCHIO GAS
MASCHIO GAS ORIENTABILE



CODICE

	F	F ₁	L	B		
MM0R45G04	1/4	1/4	29	22		
MM0R45G06	3/8	3/8	33	22		
MM0R45G08	1/2	1/2	39	28		
MM0R45G12	3/4	3/4	44	32		
MM0R45G16	1	1	47	37		

ADATTATORE A "T" MASCHIO GAS
MASCHIO GAS
MASCHIO GAS

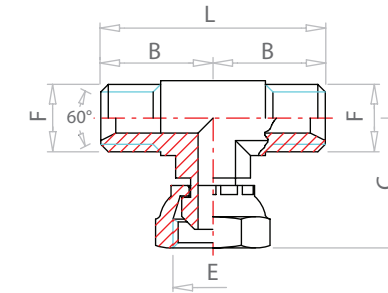


CODICE

MMMG02
MMMG04
MMMG06
MMMG08
MMMG12
MMMG16

F	L	B			
1/8	40	20			
1/4	54	27			
3/8	60	30			
1/2	74	37			
3/4	80	40			
1	100	50			

ADATTATORE A "T" MASCHIO GAS
FEMMINA GIREVOLE GAS
MASCHIO GAS

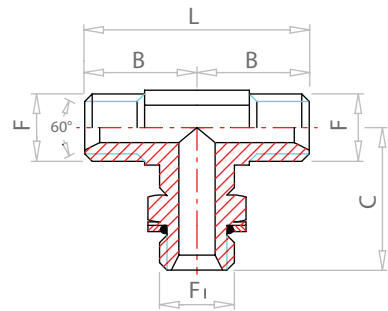


CODICE

MFGMG04
MFGMG06
MFGMG08
MFGMG12
MFGMG16

F	E	L	B	C	
1/4	1/4	54	27	29	
3/8	3/8	63	31.5	34	
1/2	1/2	72	36	40	
3/4	3/4	80	40	46	
1	1	100	50	52	

ADATTATORE A "T" MASCHIO GAS
MASCHIO GAS ORIENTABILE
MASCHIO GAS

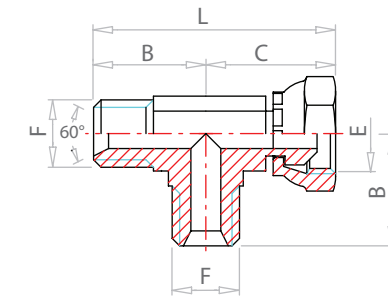


CODICE

MM0RMG04
MM0RMG06
MM0RMG080608
MM0RMG08
MM0RMG12
MM0RMG16

F	F1	L	B	C	
1/4	1/4	54	27	31.5	
3/8	3/8	63	31.5	36.5	
1/2	3/8	74	37	39.5	
1/2	1/2	74	37	43	
3/4	3/4	80	40	49	
1	1	100	50	52	

ADATTATORE A "T" MASCHIO GAS
MASCHIO GAS
FEMMINA GIREVOLE GAS

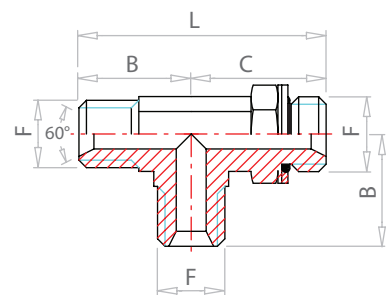


CODICE

MMFGG04
MMFGG06
MMFGG08
MMFGG12
MMFGG16

F	E	L	B	C	
1/4	1/4	56	27	29	
3/8	3/8	67	30	37	
1/2	1/2	75	35	40	
3/4	3/4	86	40	46	
1	1	102	50	52	

ADATTATORE A "T" MASCHIO GAS
MASCHIO GAS
MASCHIO GAS ORIENTABILE

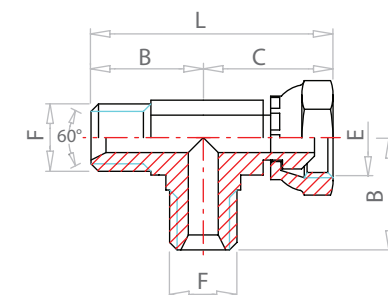


CODICE

MMMORG04
MMMORG06
MMMORG08
MMMORG12
MMMORG16

F	L	B	C		
1/4	58.5	27	31.5		
3/8	68	31.5	36.5		
1/2	79.5	36.5	43		
3/4	89	40	49		
1	102	50	52		

ADATTATORE A "T" AISI 316
MASCHIO GAS MASCHIO GAS
FEMMINA GIREVOLE GAS

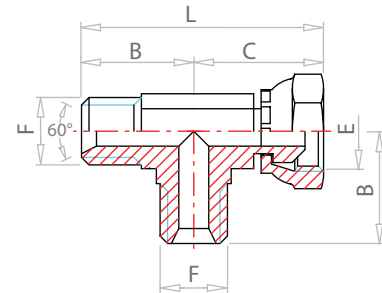


CODICE

MMFGG04 - I

F	E	L	B	C	
1/4	1/4	56	27	29	

ADATTATORE A "T" MASCHIO METRICO
MASCHIO METRICO
FEMMINA GIREVOLE METRICA

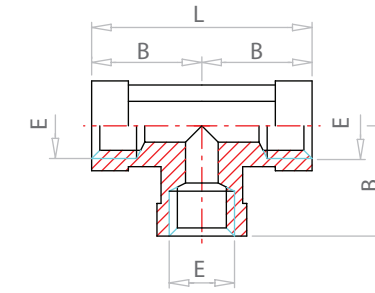


CODICE

MMFGM06

F	E	L	B	C	
16X1.5	16X1.5	65	30	35	

ADATTATORE A "T" FEMMINA FISSA GAS
FEMMINA FISSA GAS
FEMMINA FISSA GAS

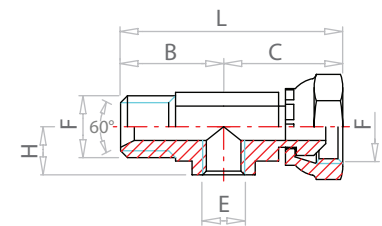


CODICE

FFFG04
FFFG06
FFFG08
FFFG12
FFFG16
FFFG20

E	L	B			
1/4	44	22			
3/8	52	26			
1/2	62	31			
3/4	70	35			
1	88	44			
1 1/4	100	50			

ADATTATORE A "T" MASCHIO GAS
FEMMINA GAS
FEMMINA GIREVOLE GAS

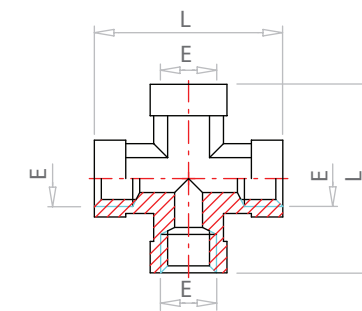


CODICE

MFFGG040204
MFFGG060406
MFFGG080408
MFFGG120812

F	E	L	B	C	H
1/4	1/8	56	27	29	11
3/8	1/4	67	30	37	15
1/2	1/4	75	35	40	16
3/4	1/2	86	40	46	20

ADATTATORE A "+" FEMMINA FISSA GAS
FEMMINA FISSA GAS - FEMMINA FISSA GAS
FEMMINA FISSA GAS

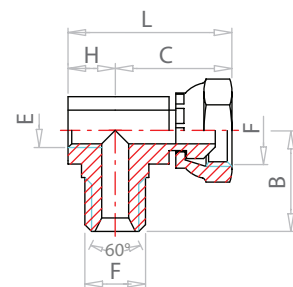


CODICE

FFFG04
FFFG06
FFFG08
FFFG12
FFFG16

E	L				
1/4	44				
3/8	52				
1/2	62				
3/4	69				
1	82				

ADATTATORE A "T" FEMMINA GAS
MASCHIO GAS
FEMMINA GIREVOLE GAS

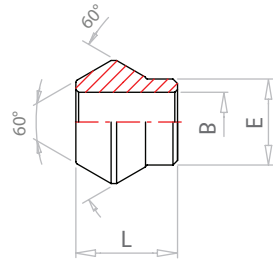


CODICE

FMFGG020404
FMFGG040606
FMFGG040808
FMFGG081212

F	E	L	B	C	H
1/4	1/8	41	27	29	12
3/8	1/4	51	30	37	14
1/2	1/4	54	35	40	14
3/4	1/2	63	40	46	17

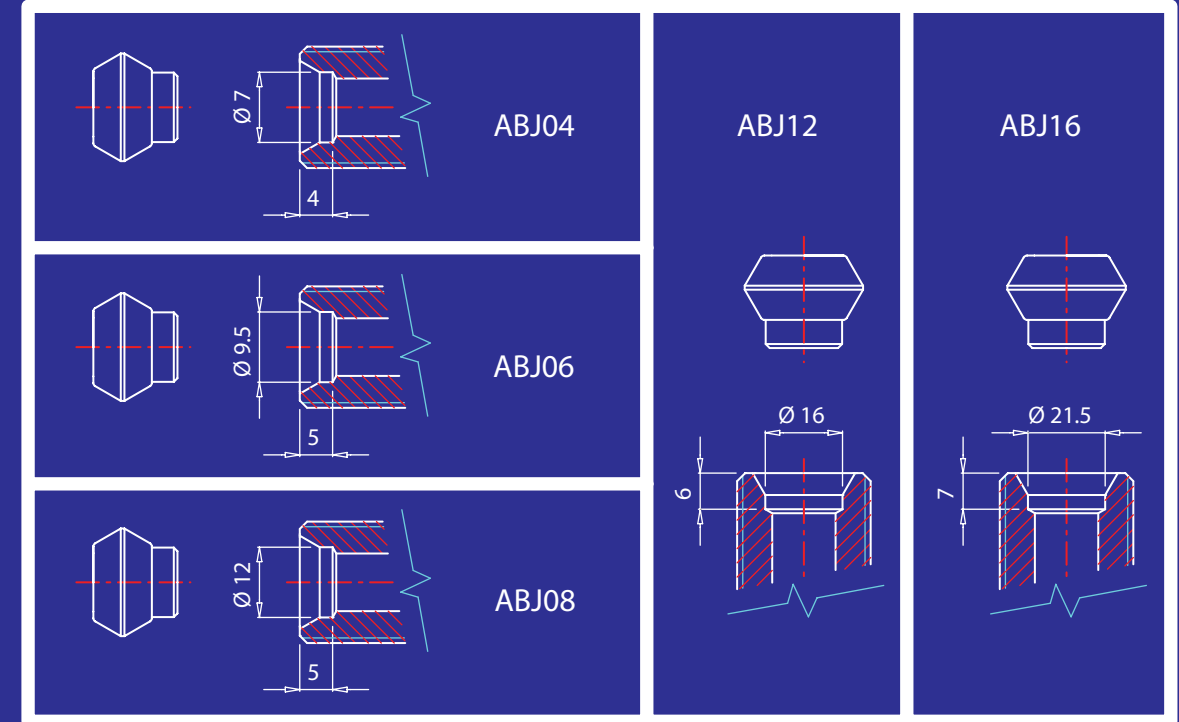
ADATTATORE BICONO JIS



CODICE

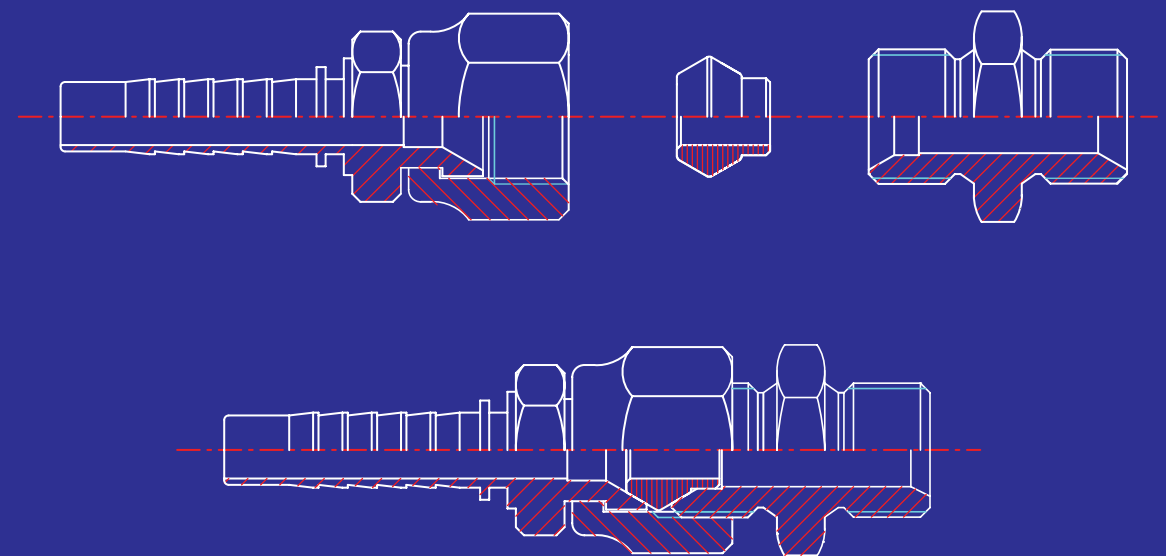
	E	L	B
ABJ04	6.9	8.9	4
ABJ06	9.4	11.1	6
ABJ08	11.9	12.3	9
ABJ12	16	14.1	14
ABJ16	21.4	16.75	18

DIAMETRI DI FORATURA PER ALLOGGIAMENTO



RACCORDO JIS

RACCORDO BSP



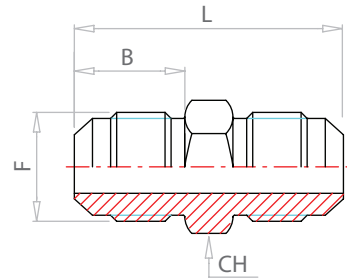


JIC 37°



46		50		53		57	
46		51		54		57	
47		51		54			
48		52		54			
48		52		55			
48		52		55			
49		53		56			
49		53		56			

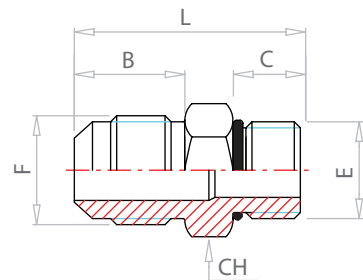
NIPPLO
MASCHIO JIC
MASCHIO JIC



CODICE

	F	L	B	CH		
HTXS6	7/16	34.8	14	13		
HTXS8	1/2	34.8	14	14		
HTXS10	9/16	35.8	14.1	16		
HTXS12	3/4	41.1	16.7	19		
HTXS16	7/8	47.8	19.3	24		
HTXS20	1 1/16	54.9	21.9	27		
HTXS25	1 5/16	57.2	23.1	36		
HTXS30	1 5/8	61.7	24.3	46		
HTXS38	1 7/8	69.8	27.5	50		

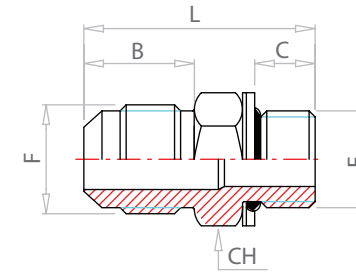
NIPPLO
MASCHIO JIC
MASCHIO JIC O-RING



CODICE

	F	E	L	B	C	CH
F50XS6 - 7/16	7/16	7/16	31.2	14	9.1	14
F50XS10 - 9/16	9/16	9/16	33	14.1	9.9	17
F50XS12 - 3/4	3/4	3/4	37.6	16.7	11.1	22
F50XS16 - 7/8	7/8	7/8	43.2	19.3	12.7	27
F50XS20 - 7/8	1 1/16	7/8	46.4	21.9	12.7	27
F50XS20 - 1 1/16	1 1/16	1 1/16	50	21.9	15.1	32
F50XS25 - 1 5/16	1 5/16	1 5/16	51.8	23.1	15.1	38
F50XS30 - 1 5/8	1 5/8	1 5/8	55.1	24.3	15.1	50

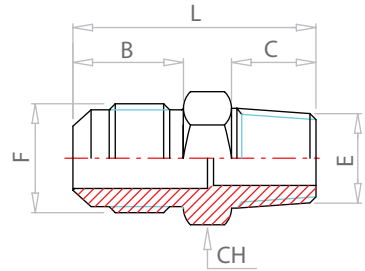
NIPPLO
MASCHIO JIC
MASCHIO GAS O-RING



CODICE

	F	E	L	B	C	CH
F40XS6 - 1/8	7/16	1/8	28.7	14	6.3	16
F40XS6 - 1/4	7/16	1/4	32	14	9.5	19
F40XS6 - 3/8	7/16	3/8	33	14	9.5	22
F40XS6 - 1/2	7/16	1/2	38.6	14	13	30
F40XS8 - 1/4	1/2	1/4	32	14	9.5	19
F40XS8 - 3/8	1/2	3/8	33.7	14	9.5	22
F40XS10 - 1/4	9/16	1/4	32	14.1	9.5	19
F40XS10 - 3/8	9/16	3/8	33	14.1	9.5	22
F40XS10 - 1/2	9/16	1/2	38.6	14.1	13	30
F40XS12 - 1/4	3/4	1/4	35	16.7	9.5	19
F40XS12 - 3/8	3/4	3/8	36	16.7	9.5	22
F40XS12 - 1/2	3/4	1/2	41.4	16.7	13	30
F40XS12 - 3/4	3/4	3/4	42.4	16.7	13	36
F40XS16 - 3/8	7/8	3/8	39.1	19.3	9.5	24
F40XS16 - 1/2	7/8	1/2	43.9	19.3	13	30
F40XS16 - 3/4	7/8	3/4	43.9	19.3	13	36
F40XS20 - 1/2	1 1/16	1/2	46.7	21.9	13	30
F40XS20 - 3/4	1 1/16	3/4	47.5	21.9	13	36
F40XS20 - 1	1 1/16	1	52.6	21.9	16	46
F40XS25 - 3/4	1 5/16	3/4	48.5	23.1	13	36
F40XS25 - 1	1 5/16	1	53.6	23.1	16	46
F40XS30 - 1	1 5/8	1	53.6	24.3	16	46
F40XS30 - 1 1/4	1 5/8	1 1/4	56.9	24.3	16	50
F40XS38 - 1 1/4	1 7/8	1 1/4	60.4	27.5	16	50

**NIPLO
MASCHIO JIC
MASCHIO CONICO GAS**

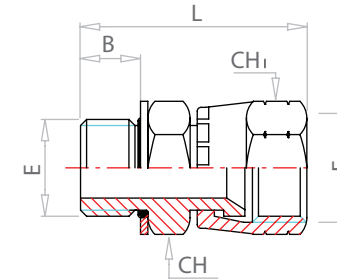


CODICE

F3XS25-1

F	E	L	B	C	CH
1 5/16	1	58	23	24	36

**RACCORDO
MASCHIO GAS O-RING
FEMMINA GIREVOLE JIC**

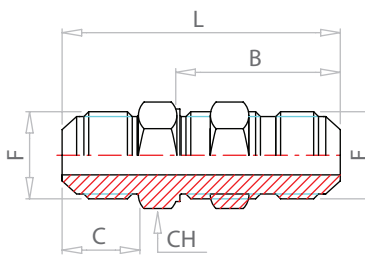


CODICE

F64XS6 - 1/8
F64XS8 - 1/4
F64XS10 - 1/4
F64XS10 - 3/8
F64XS12 - 1/4
F64XS12 - 3/8
F64XS12 - 1/2
F64XS16 - 1/2
F64XS20 - 1/2
F64XS20 - 3/4
F64XS25 - 1
F64XS30 - 1 1/4

F	E	L	B	CH	CH ₁
7/16	1/8	31.4	6.3	16	17
1/2	1/4	37.5	9.5	19	19
9/16	1/4	38	9.5	19	19
9/16	3/8	39	9.5	22	19
3/4	1/4	41.2	9.5	19	24
3/4	3/8	41.7	9.5	22	24
3/4	1/2	46	9.5	27	22
7/8	1/2	47.9	13	30	27
1 1/16	1/2	50	13	27	32
1 1/16	3/4	50.3	13	36	32
1 5/16	1	58.6	16	46	38
1 5/8	1 1/4	64.9	16	50	50

**PASSAPARETE
MASCHIO JIC
MASCHIO JIC CON CONTRODADO**

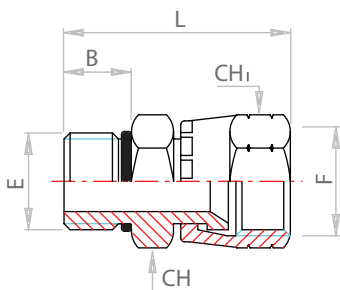


CODICE

WTXS6
WTXS8
WTXS10
WTXS12
WTXS16
WTXS20
WTXS25

F	L	C	B	CH
7/16	52.6	14	31.5	17
1/2	52.6	14	31.5	19
9/16	55.4	14.1	33.5	22
3/4	62	16.7	37.6	24
7/8	69.6	19.3	41.1	30
1 1/16	78.5	21.9	45.4	36
1 5/16	79.8	23.1	45.4	41

**RACCORDO
MASCHIO JIC O-RING
FEMMINA GIREVOLE JIC**

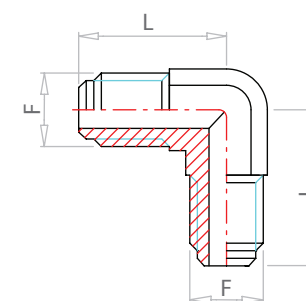


CODICE

F65XS6 - 7/16
F65XS8 - 1/2
F65XS10 - 9/16
F65XS12 - 3/4
F65XS16 - 7/8
F65XS20 - 1 1/16
F65XS25 - 1 5/16
F65XS30 - 1 5/8

F	E	L	B	CH	CH ₁
7/16	7/16	32	9.1	14	17
1/2	1/2	34.1	9.1	16	19
9/16	9/16	35.8	9.9	17	19
3/4	3/4	40.2	11.1	22	24
1 1/6	7/8	46.4	21.9	27	27
1 1/16	1 1/16	49.6	15.1	32	32
1 5/16	1 5/16	52.2	15.1	38	38
1 5/8	1 5/8	58.1	15.1	50	50

**ADATTATORE A 90°
MASCHIO JIC
MASCHIO JIC**

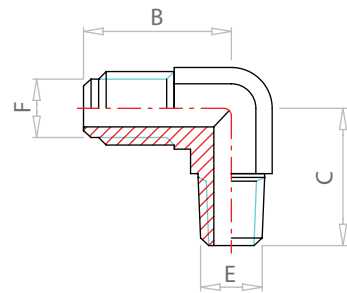


CODICE

ETXS6
ETXS8
ETXS10
ETXS12
ETXS16
ETXS20
ETXS25

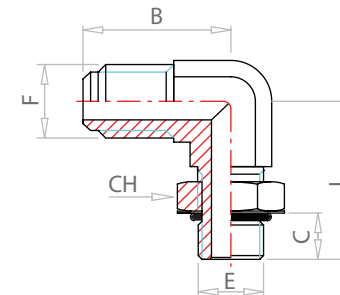
F	L
7/16	22.6
1/2	24.1
9/16	26.9
3/4	31.8
7/8	37
1 1/16	42
1 5/16	46

ADATTATORE A 90°
MASCHIO JIC
MASCHIO CONICO GAS



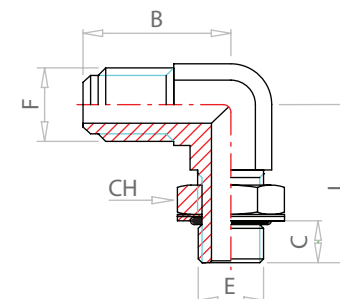
CODICE	F	E	B	C		
C3XS6 - 1/8	7/16	1/8	22.6	19.8		
C3XS6 - 1/4	7/16	1/4	26.9	27.7		
C3XS8 - 1/8	1/2	1/8	24.1	19.8		
C3XS8 - 1/4	1/2	1/4	26.9	27.7		
C3XS10 - 1/4	9/16	1/4	26.9	27.7		
C3XS10 - 3/8	9/16	3/8	29	31		
C3XS10 - 1/2	9/16	1/2	31.2	37.3		
C3XS12 - 1/4	3/4	1/4	31.8	31		
C3XS12 - 3/8	3/4	3/8	31.8	31		
C3XS12 - 1/2	3/4	1/2	33.7	37.3		
C3XS16 - 3/8	7/8	3/8	36.8	33		
C3XS16 - 1/2	7/8	1/2	36.8	37.3		
C3XS16 - 3/4	7/8	3/4	38.9	40.4		
C3XS20 - 1/2	1 1/16	1/2	42.2	40.4		
C3XS20 - 3/4	1 1/16	3/4	42.2	40.4		
C3XS20 - 1	1 1/16	1	44.7	50		
C3XS25 - 3/4	1 5/16	3/4	46	45.2		
C3XS25 - 1	1 5/16	1	46	50		
C3XS30 - 1	1 5/8	1	52.3	59.6		
C3XS30 - 1 1/4	1 5/8	1 1/4	52.3	59.6		

ADATTATORE A 90°
MASCHIO JIC
MASCHIO ORIENTABILE JIC O-RING



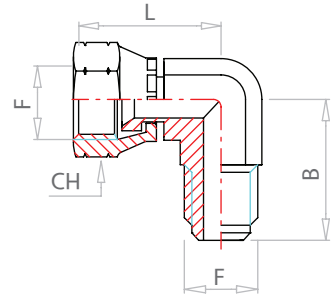
CODICE	F	E	B	L	C	CH
C50XS6 - 7/16	7/16	7/16	22.6	26.2	9	14
C50XS8 - 1/2	1/2	1/2	24.1	27.7	9	16
C50XS10 - 9/16	9/16	9/16	26.9	31.8	10	17
C50XS12 - 3/4	3/4	3/4	31.8	36.8	11	22
C50XS16 - 7/8	7/8	7/8	36.8	43.2	12.7	27
C50XS20 - 7/8	1 1/16	7/8	42.2	45.2	12.7	27
C50XS20 - 11/16	1 1/16	1 1/16	42.2	49.3	15	32
C50XS25 - 15/16	1 5/16	1 5/16	46	52.1	15	38
C50XS30 - 15/8	1 5/8	1 5/8	46	52.1	15	50

ADATTATORE A 90°
MASCHIO JIC
MASCHIO ORIENTABILE GAS O-RING



CODICE	F	E	B	L	C	CH
C40XS6 - 1/8	7/16	1/8	22.6	26	6.3	14
C40XS6 - 1/4	7/16	1/4	26.9	32	9.5	19
C40XS8 - 1/8	1/2	1/8	24.1	27	6.3	14
C40XS8 - 1/4	1/2	1/4	26.9	32	9.5	19
C40XS10 - 1/4	9/16	1/4	26.9	32	9.5	19
C40XS10 - 3/8	9/16	3/8	29	37	9.5	22
C40XS12 - 1/4	3/4	1/4	31.8	37	9.5	19
C40XS12 - 3/8	3/4	3/8	31.8	37	9.5	22
C40XS12 - 1/2	3/4	1/2	33.7	43	13	27
C40XS16 - 3/8	7/8	3/8	36.8	43	9.5	22
C40XS16 - 1/2	7/8	1/2	36.8	43	13	27
C40XS20 - 1/2	1 1/16	1/2	42.2	49.5	13	27
C40XS20 - 3/4	1 1/16	3/4	42.2	49.5	13	36
C40XS25 - 3/4	1 5/16	3/4	46	49.5	13	36
C40XS25 - 1	1 5/16	1	46	52	16	41
C40XS32 - 1 1/4	1 5/8	1 1/4	52.3	57	16	50

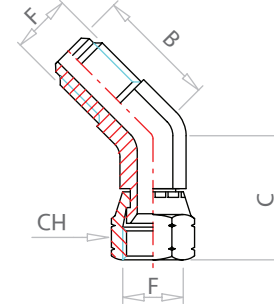
ADATTATORE A 90°
MASCHIO JIC
FEMMINA GIREVOLE JIC



CODICE

	F	B	L	CH		
C6XS6	7/16	22.6	25.7	17		
C6XS8	1/2	24.1	29.5	19		
C6XS10	9/16	26.9	32.5	19		
C6XS12	3/4	31.8	37.7	24		
C6XS16	7/8	36.8	41.2	27		
C6XS20	1 1/16	42.2	47.3	32		
C6XS25	1 5/16	46	51.6	38		
C6XS30	1 5/8	52.3	59.9	50		

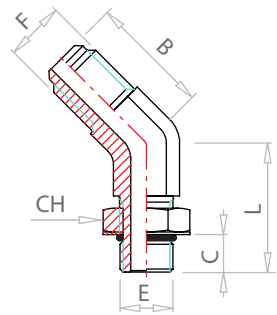
ADATTATORE A 45°
MASCHIO JIC
FEMMINA GIREVOLE JIC



CODICE

	F	B	C	CH		
V6XS10	9/16	21.1	27.5	19		
V6XS12	3/4	24.9	32.2	24		
V6XS16	7/8	28.2	34.7	27		
V6XS20	1 1/16	32.5	38.1	32		
V6XS25	1 5/16	37.3	43.6	38		

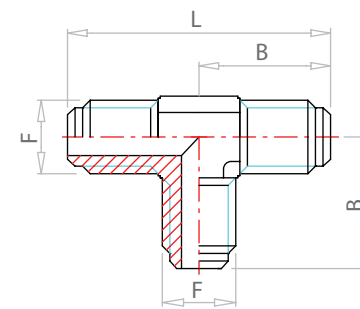
ADATTATORE A 45°
MASCHIO JIC
MASCHIO ORIENTABILE JIC O-RING



CODICE

	F	E	B	L	C	CH
V50XS06 - 7/16	7/16	7/16	19.5	29	8	14
V50XS10 - 9/16	9/16	9/16	21.1	29	10	17
V50XS12 - 3/4	3/4	3/4	24.9	33	11	22
V50XS16 - 7/8	7/8	7/8	28.2	38.6	12.5	27
V50XS20 - 1 1/16	1 1/16	1 1/16	32.5	43.9	15	32
V50XS25 - 1 5/16	1 5/16	1 5/16	37.3	47.2	15	38

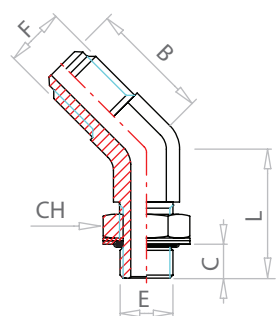
ADATTATORE A "T" MASCHIO JIC
MASCHIO JIC
MASCHIO JIC



CODICE

	F	B	L			
JTXS6	7/16	22.6	45.2			
JTXS8	1/2	24.1	48.2			
JYXS10	9/16	26.9	53.8			
JTXS12	3/4	31.8	63.6			
JTXS16	7/8	36.8	73.6			
JTXS20	1 1/16	42.2	84.4			
JTXS25	1 5/16	46	92			

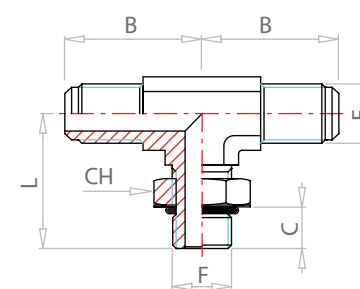
ADATTATORE A 45°
MASCHIO JIC
MASCHIO ORIENTABILE GAS O-RING



CODICE

	F	E	B	L	C	CH
V40XS6 - 1/8	7/16	1/8	18	26.5	6.3	14
V40XS8 - 1/4	1/2	1/4	21	29	9.5	19
V40XS10 - 1/4	9/16	1/4	21.1	29	9.5	19
V40XS12 - 3/8	3/4	3/8	24.9	33	9.5	22
V40XS16 - 1/2	7/8	1/2	28.2	38.5	13	27
V40XS20 - 3/4	1 1/16	3/4	32.5	44	13	36
V40XS25 - 1	1 5/16	1	37.3	47.5	16	41

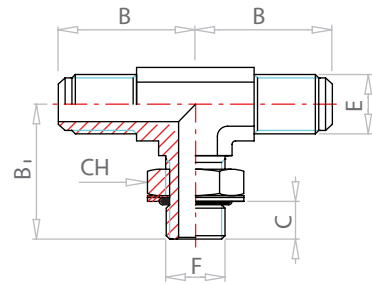
ADATTATORE A "T" MASCHIO JIC
MASCHIO ORIENTABILE JIC O-RING
MASCHIO JIC



CODICE

	F	E	B	L	C	CH
S50XS6 - 7/16	7/16	7/16	22.6	26.2	9	14
S50XS8 - 1/2	1/2	1/2	24.1	27.7	9	16
S50XS10 - 9/16	9/16	9/16	26.9	31.8	10	17
S50XS12 - 3/4	3/4	3/4	31.8	36.8	11	22
S50XS16 - 7/8	7/8	7/8	36.8	43.2	12.7	27
S50XS20 - 1 1/16	1 1/16	1 1/16	42.2	49.3	15	32
S50XS25 - 1 5/16	1 5/16	1 5/16	46	52.1	15	38

ADATTATORE A "T" MASCHIO JIC
MASCHIO ORIENTABILE GAS O-RING
MASCHIO JIC

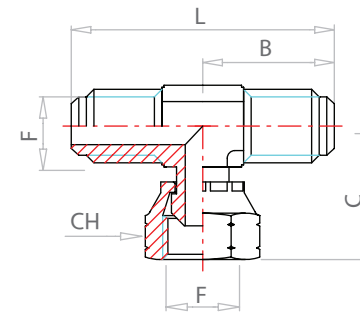


CODICE

S40XS6 - 1/8
S40XS10 - 1/4
S40XS12 - 3/8
S40XS16 - 1/2
S40XS20 - 3/4
S40XS25 - 1
S40XS30 - 1 1/4

E	F	B	B ₁	C	CH
7/16	1/8	22.6	26	6.3	14
9/16	1/4	26.9	32.5	9.5	19
3/4	3/8	31.8	37.5	9.5	22
7/8	1/2	36.8	43	13	27
1 1/16	3/4	42.2	49.5	13	36
1 5/16	1	46	52	16	41
1 5/8	1 1/4	52.3	57	16	50

ADATTATORE A "T" MASCHIO JIC
FEMMINA GIREVOLE JIC
MASCHIO JIC

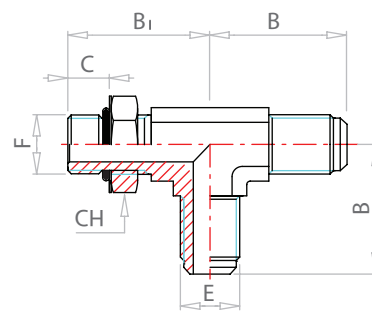


CODICE

S6XS6
S6XS8
S6XS10
S6XS12
S6XS16
S6XS20
S6XS25
S6XS30

F	B	L	C	CH
7/16	22.6	45.2	25.7	17
1/2	24.1	48.2	29.5	19
9/16	26.9	53.8	32.5	19
3/4	31.8	63.6	37.7	24
7/8	36.8	73.6	41.2	27
1 1/16	42.2	84.4	47.3	32
1 5/16	46	92	51.6	38
1 5/8	52.3	104.6	59.9	50

ADATTATORE A "T" MASCHIO ORIENTABILE JIC O-RING
MASCHIO JIC - MASCHIO JIC

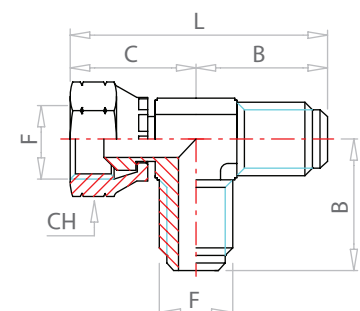


CODICE

R50XS6 - 7/16
R50XS8 - 1/2
R50XS10 - 9/16
R50XS12 - 3/4
R50XS14 - 7/8
R50XS16 - 7/8
R50XS20 - 1 1/16
R50XS25 - 1 5/16

E	F	B	B ₁	C	CH
7/16	7/16	22.6	26.2	9	14
1/2	1/2	24.1	27.7	9	16
9/16	9/16	26.9	31.8	10	17
3/4	3/4	31.8	36.8	11	22
7/8	7/8	36.8	43.2	12.7	27
7/8	7/8	36.8	43.2	12.7	27
1 1/16	1 1/16	42.2	49.3	15	32
1 5/16	1 5/16	46	52.1	15	38

ADATTATORE A "T" FEMMINA GIREVOLE JIC
MASCHIO JIC
MASCHIO JIC

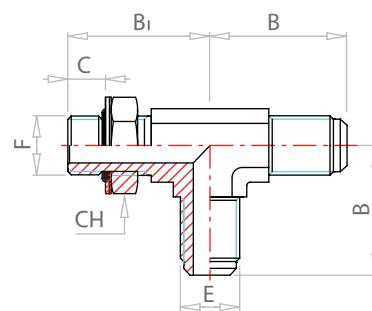


CODICE

R6XS6
R6XS8
R6XS10
R6XS12
R6XS16
R6XS20
R6XS25

F	B	L	C	CH
7/16	22.6	48.3	25.7	17
1/2	24.1	53.6	29.5	19
9/16	26.9	59.4	32.5	19
3/4	31.8	69.5	37.7	24
7/8	36.8	78	41.2	27
1 1/16	42.2	89.5	47.3	32
1 5/16	46	97.6	51.6	38

ADATTATORE A "T" MASCHIO ORIENTABILE GAS O-RING
MASCHIO JIC - MASCHIO JIC

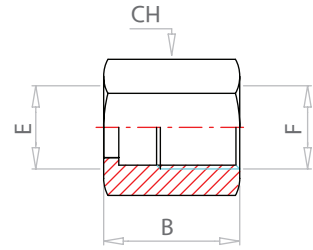


CODICE

R40XS10 - 1/4
R40XS12 - 3/8
R40XS16 - 1/2
R40XS20 - 3/4

E	F	B	B ₁	C	CH
7/16	1/4	22.6	26	6.3	14
3/4	3/8	31.8	37.5	9.5	22
7/8	1/2	36.8	43	13	27
1 1/16	3/4	42.2	49.5	13	36

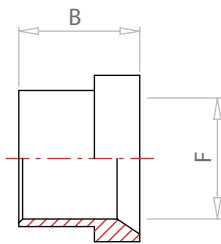
DADO JIC



CODICE

	F	B	E	CH		
BTXS6	7/16	15.5	6	14		
BTXS8	1/2	17	8	17		
BTXS10	9/16	18.3	10	19		
BTXS12	3/4	21.3	12	22		
BTXS14	7/8	24.6	14	27		
BTXS16	7/8	24.6	16	27		
BTXS18	1 1/16	25.9	18	32		
BTXS20	1 1/16	25.9	20	32		
BTXS25	1 5/16	28.4	25	41		
BTXS30	1 5/8	31	30	50		

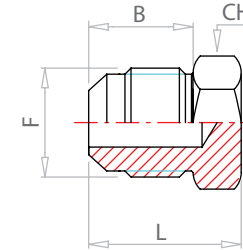
BUSSOLA PERTUBO



CODICE

	B	F				
TXS6	10.4	6.13				
TXS8	11.2	8.13				
TXS10	12.7	10.13				
TXS12	14.2	12.13				
TXS14	16.8	14.15				
TXS15	16.8	15.15				
TXS16	16.8	16.15				
TXS18	17.3	18.15				
TXS20	17.3	20.15				
TXS25	19.8	25.15				
TXS30	23.1	30.15				

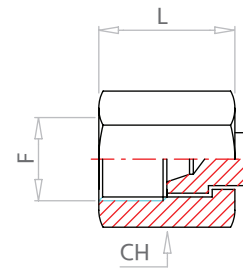
TAPPO MASCHIO JIC



CODICE

	F	L	B	CH		
PNTXS6	7/16	20.3	14	13		
PNTXS8	1/2	20.3	14	14		
PNTXS10	9/16	20.3	14.1	16		
PNTXS12	3/4	23.9	16.7	19		
PNTXS16	7/8	27.9	19.3	24		
PNTXS20	1 1/16	32.5	21.9	27		
PNTXS25	1 5/16	33.8	23.1	36		
PNTXS30	1 5/8	36.8	24.3	46		

TAPPO FEMMINA JIC

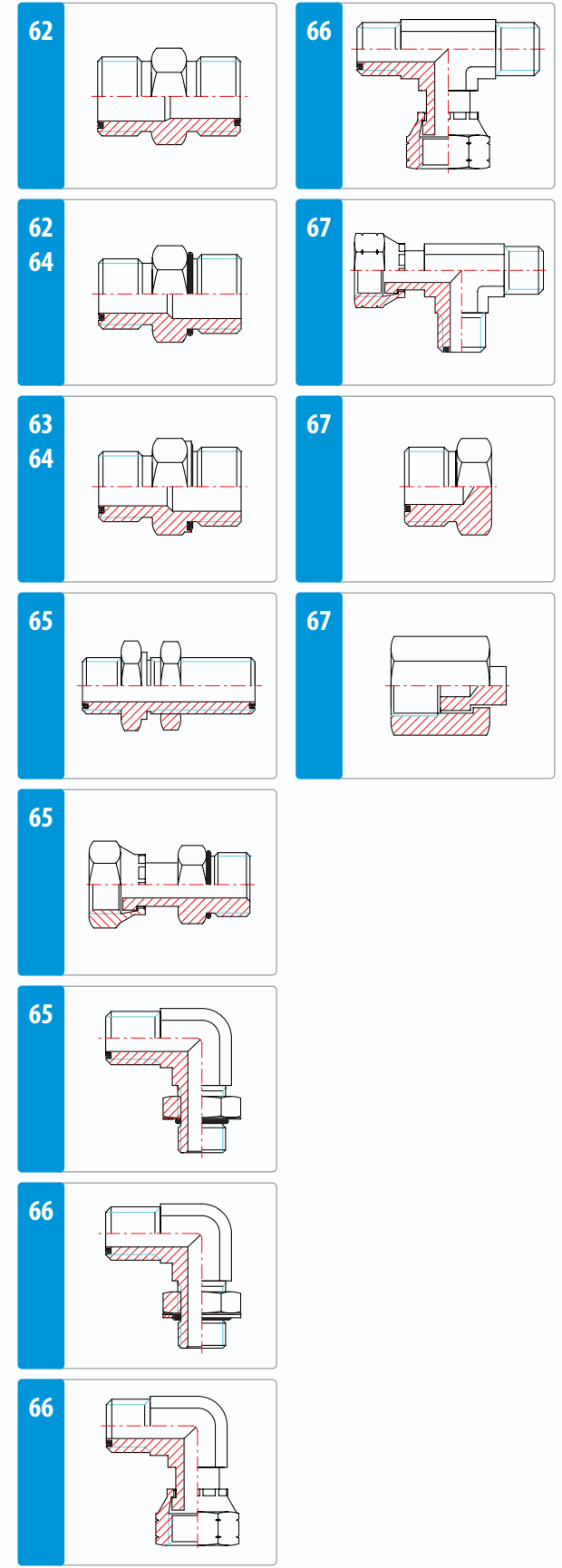


CODICE

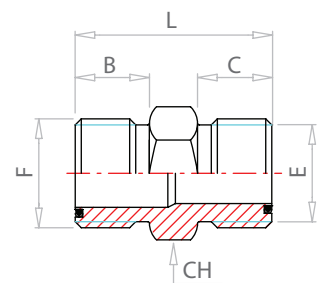
	F	L	CH			
FNTXS6	7/16	15.5	14			
FNTXS8	1/2	17	17			
FNTXS10	9/16	18.3	19			
FNTXS12	3/4	21.3	22			
FNTXS16	7/8	24.6	27			
FNTXS20	1 1/16	25.9	32			
FNTXS25	1 5/16	28.4	41			
FNTXS30	1 5/8	31	50			



ORFS



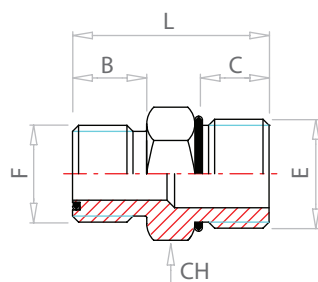
NIPPLO
MASCHIO ORFS
MASCHIO ORFS



CODICE

	F	E	L	B	C	CH
HLOS4	9/16	9/16	27.5	10	10	17
HLOS6	1 1/16	1 1/16	31	11	11	19
HLOS8	1 3/16	1 3/16	35.5	13	13	22
HLOS10	1	1	42.5	15.5	15.5	27
HLOS12	1 3/16	1 3/16	47	17	17	32
HLOS16	1 7/16	1 7/16	49	17.5	17.5	41
HLOS20	1 11/16	1 11/16	51	17.5	17.5	46

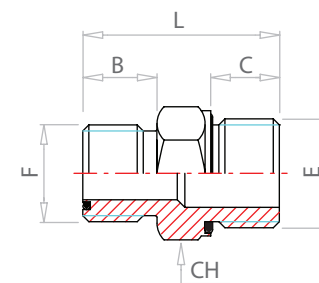
NIPPLO
MASCHIO ORFS
MASCHIO JIC O-RING



CODICE

	F	E	L	B	C	CH
F50LOS4 - 7/16	9/16	7/16	29	17.5	11	17
F50LOS4 - 9/16	9/16	9/16	30.5	18.5	12	19
F50LOS6 - 9/16	1 1/16	9/16	32	20	12	22
F50LOS6 - 3/4	1 1/16	3/4	35	21	14	22
F50LOS8 - 9/16	1 3/16	9/16	37.5	25.5	12	22
F50LOS8 - 3/4	1 3/16	3/4	36.5	22.5	14	22
F50LOS8 - 7/8	1 3/16	7/8	40.5	24.5	16	27
F50LOS10 - 3/4	1	3/4	45	31	14	27
F50LOS10 - 7/8	1	7/8	43	27	16	27
F50LOS10 - 1 1/16	1	1 1/16	47	28.5	18.5	32
F50LOS12 - 1 1/16	1 3/16	1 1/16	48.5	30	18.5	32
F50LOS12 - 1 5/16	1 3/16	1 5/16	50	31.5	18.5	41
F50LOS16 - 1 5/16	1 7/16	1 5/16	50.5	32	18.5	41

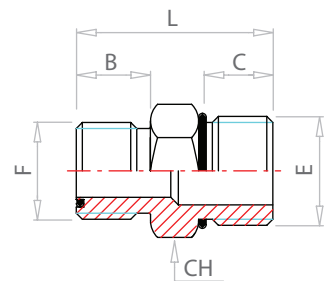
NIPPLO
MASCHIO ORFS
MASCHIO GAS O-RING ICASSATO



CODICE

	F	E	L	B	C	CH
F40MLOS4 - 1/8	9/16	1/8	25.5	10	8	17
F40MLOS4 - 1/4	9/16	1/4	30.5	10	12	19
F40MLOS4 - 3/8	9/16	3/8	31.5	10	12	22
F40MLOS6 - 1/4	1 1/16	1/4	31.5	11	12	19
F40MLOS6 - 3/8	1 1/16	3/8	33.5	11	12	22
F40MLOS6 - 1/2	1 1/16	1/2	37	11	14	27
F40MLOS8 - 1/4	1 3/16	1/4	39.5	13	12	22
F40MLOS8 - 3/8	1 3/16	3/8	34.5	13	12	22
F40MLOS8 - 1/2	1 3/16	1/2	38.5	13	14	27
F40MLOS10 - 3/8	1	3/8	43	15.5	12	27
F40MLOS10 - 1/2	1	1/2	41	15.5	14	27
F40MLOS10 - 3/4	1	3/4	44.5	15.5	16	32
F40MLOS12 - 1/2	1 3/16	1/2	48.5	17	14	32
F40MLOS12 - 3/4	1 3/16	3/4	46	17	16	32
F40MLOS12 - 1	1 3/16	1	49.5	17	18	41
F40MLOS16 - 3/4	1 7/16	3/4	51	17.5	16	41
F40MLOS16 - 1	1 7/16	1	49	17.5	18	41
F40MLOS16 - 1 1/4	1 7/16	1 1/4	54	17.5	20	50
F40MLOS20 - 1	1 11/16	1	57.5	17.5	18	46
F40MLOS20 - 1 1/4	1 11/16	1 1/4	54	17.5	20	50

NIPPLO MASCHIO ORFS
MASCHIO METRICO O-RING

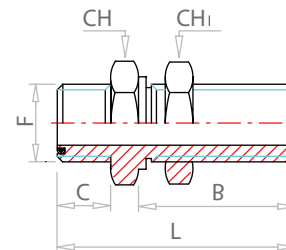


CODICE

- F87MLOS4 - 10
- F87MLOS4 - 12
- F87MLOS6 - 14
- F87MLOS6 - 16
- F87MLOS8 - 18
- F87MLOS8 - 22
- F87MLOS10 - 22
- F87MLOS10 - 27
- F87MLOS12 - 27
- F87MLOS12 - 33
- F87MLOS16 - 33

F	E	L	B	C	CH
9/16	10X1	27	10	12	17
9/16	12X1.5	28.5	10	13.5	17
1 1/16	14X1.5	32	11	13.5	22
1 1/16	16X1.5	33.5	11	15	22
1 3/16	18X1.5	38	13	16.5	24
1 3/16	22X1.5	38.5	13	17.5	27
1	22X1.5	42	15.5	17.5	27
1	27X2	47	15.5	21	32
1 3/16	27X2	48.5	17	21	32
1 3/16	33X2	51.5	17	21.5	41
1 7/16	33X2	52	17.5	21.5	41

PASSAPARETE MASCHIO ORFS
MASCHIO ORFS CON CONTRODADO

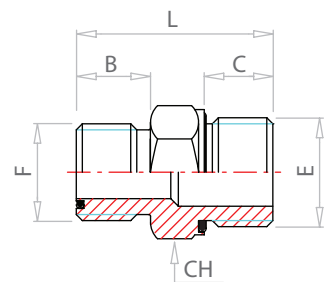


CODICE

- WLOS4
- WLOS6
- WLOS8
- WLOS10
- WLOS12
- WLOS16
- WLOS20

F	L	C	B	CH	CH1
9/16	48	10	31.5	22	22
1 1/16	53	11	34	27	24
1 3/16	58	13	36.5	30	27
1	66.5	15.5	40.5	36	36
1 3/16	69	17	41.5	41	41
1 7/16	70	17.5	42	46	46
1 11/16	70	17.5	42	50	50

NIPPLO MASCHIO ORFS
MASCHIO METRICO O-RING
INCASSATO

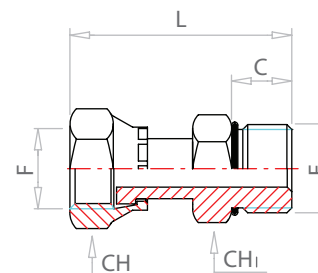


CODICE

- F8MLOS4 - 10
- F8MLOS4 - 12
- F8MLOS6 - 14
- F8MLOS6 - 16
- F8MLOS8 - 18
- F8MLOS8 - 22
- F8MLOS10 - 22
- F8MLOS10 - 27
- F8MLOS12 - 27
- F8MLOS12 - 33
- F8MLOS16 - 33

F	E	L	B	C	CH
9/16	10X1	25	10	8	17
9/16	12X1.25	29.5	10	12	17
1 1/16	14X1.5	32	11	12	22
1 1/16	16X1.5	32	11	12	22
1 3/16	18X1.5	36.5	13	12	24
1 3/16	22X1.5	38.5	13	14	27
1	22X1.5	41	15.5	14	27
1	27X2	44.5	15.5	16	32
1 3/16	27X2	46	17	16	32
1 3/16	33X2	49.5	17	18	41
1 7/16	33X2	50	17.5	18	41

RACCORDO FEMMINA GIREVOLE ORFS
MASCHIO GAS O-RING

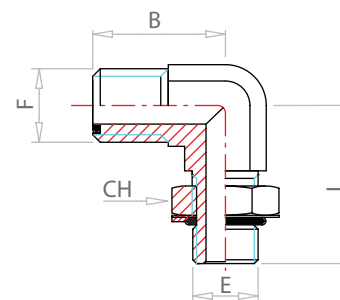


CODICE

- F64MLOS4 - 1/4
- F64MLOS4 - 3/8
- F64MLOS6 - 1/4
- F64MLOS6 - 3/8
- F64MLOS8 - 1/2
- F64MLOS10 - 1/2
- F64MLOS12 - 3/4
- F64MLOS16 - 3/4
- F64MLOS16 - 1
- F64MLOS20 - 1
- F64MLOS20 - 1 1/4

F	E	L	C	CH	CH1
9/16	1/4	46.7	14	22	19
9/16	3/8	45.7	14.5	22	19
1 1/16	1/4	50	14.5	22	19
1 1/16	3/8	49	14.5	22	22
1 3/16	1/2	61	17	27	27
1	3/4	68	19	36	32
1 13/16	3/4	72	19	36	32
1 7/16	3/4	80.3	19	41	41
1 7/16	1	82.3	21	41	41
1 11/16	1	82.3	21	41	50
1 11/16	1 1/4	83.8	23	50	50

ADATTATORE A 90° MASCHIO ORFS
MASCHIO ORIENTABILE JIC O-RING

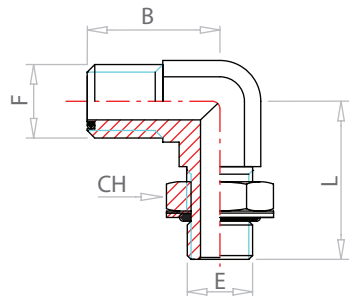


CODICE

- C50LOS4 - 7/16
- C50LOS4 - 9/16
- C50LOS6 - 9/16
- C50LOS6 - 3/4
- C50LOS8 - 3/4
- C50LOS10 - 7/8
- C50LOS12 - 1 1/16
- C50LOS16 - 1 5/16

F	E	B	L	CH
9/16	7/16	22.5	32.5	16
9/16	9/16	23.5	37	19
1 1/16	9/16	25	37	19
1 1/16	3/4	26.5	40.5	24
1 3/16	3/4	28	40.5	24
1	7/8	33.5	50	27
1 3/16	1 1/16	37.5	55	32
1 7/16	1 5/16	41.5	59.5	41

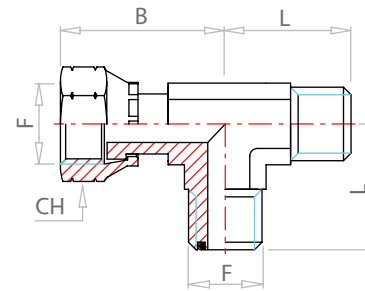
ADATTATORE A 90°
MASCHIO ORFS
MASCHIO ORIENTABILE GAS O-RING



CODICE

	F	E	B	L	CH
C40MLOS4 - 1/8	9/16	1/8	22.7	32.2	14
C40MLOS4 - 1/4	9/16	1/4	24.7	36.3	19
C40MLOS6 - 3/8	11/16	3/8	26.3	38.4	22
C40MLOS8 - 3/8	13/16	3/8	28	38	22
C40MLOS8 - 1/2	13/16	1/2	32.2	47.4	27
C40MLOS10 - 3/8	1	3/8	33.5	43	22
C40MLOS10 - 1/2	1	1/2	33.5	48	27
C40MLOS12 - 3/4	1 3/16	1/4	37.5	47.9	32
C40MLOS16 - 1	1 7/16	1	42	57.2	41

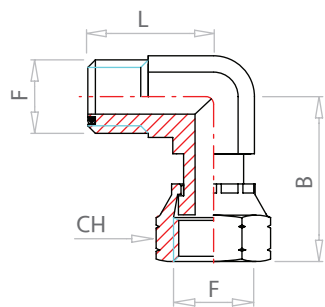
ADATTATORE A "T" FEMMINA GIREVOLE ORFS
MASCHIO ORFS
MASCHIO ORFS



CODICE

	F	L	B	CH
R6LOS4	9/16	23.7	34.7	19
R6LOS6	11/16	27.3	38.5	22
R6LOS8	13/16	30.2	49	27
R6LOS10	1	34	54	30
R6LOS12	1 3/16	37.5	61	36
R6LOS16	1 7/16	41.5	68.3	41
R6LOS20	1 11/16	44.5	72.8	50

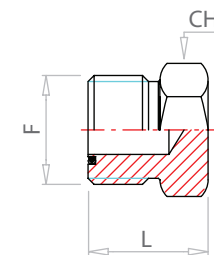
ADATTATORE A 90°
MASCHIO ORFS
FEMMINA GIREVOLE ORFS



CODICE

	F	L	B	CH
C6LOS4	9/16	20.5	34.7	19
C6LOS6	11/16	26.3	41.5	22
C6LOS8	13/16	28	49	27
C6LOS10	1	34	57.5	30
C6LOS12	1 3/16	37.5	62	36
C6LOS16	1 7/16	40.5	68.3	36
C6LOS20	1 11/16	43.5	72.8	50
C6LOS24	2	49	78	60

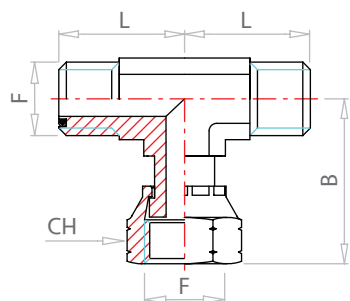
TAPPO
MASCHIO ORFS



CODICE

	F	L	CH
PNL04	9/16	16.5	17
PNL06	11/16	18	22
PNL08	13/16	22	27
PNL010	1	25.5	30
PNL012	1 3/16	27	36
PNL016	1 7/16	29	41
PNL020	1 11/16	29	50

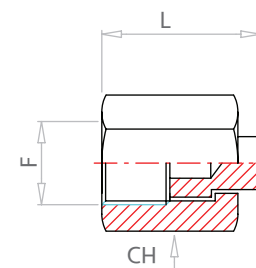
ADATTATORE A "T" MASCHIO ORFS
FEMMINA GIREVOLE ORFS
MASCHIO ORFS



CODICE

	F	L	B	CH
S6LOS4	9/16	23.7	34.7	19
S6LOS6	11/16	27.3	38.5	22
S6LOS8	13/16	30.2	49	27
S6LOS10	1	34	54	30
S6LOS12	1 3/16	37.5	61	36
S6LOS16	1 7/16	41.5	68.3	41

TAPPO
FEMMINA ORFS



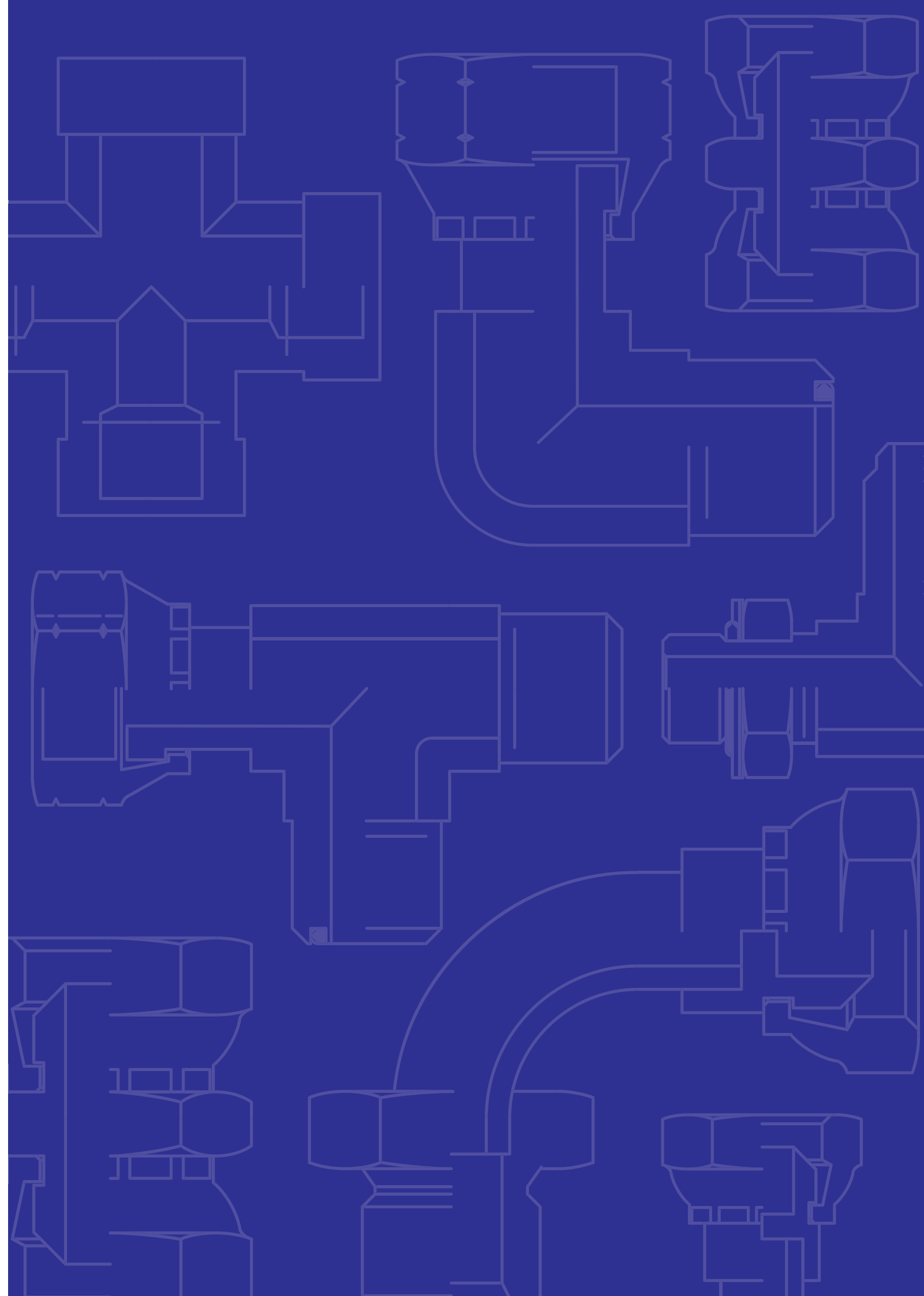
CODICE

	F	L	CH
FNLS4	9/16	16	19
FNLS6	11/16	18	22
FNLS8	13/16	22	27
FNLS10	1	25.5	30
FNLS12	1 3/16	27	36
FNLS16	1 7/16	29	41
FNLS20	1 11/16	29	50



La ditta si riserva il diritto di apportare variazioni tecniche, dimensionali ed estetiche senza preavviso.

CA_06_07_00





Depari srl

33170 Pordenone - Viale Aquileia 50
t. 0434 520 317 - f. 0434 520 703

info@depari.it - www.depari.it